

UPSTATE IMPRESSIONS

YEAR IN REVIEW

A watercolor illustration of a park scene during autumn. In the foreground, there is a large, open green lawn with several people walking. To the left, a large pavilion with a grey roof and white support structure is visible. The middle ground features a winding path and a lake. The background shows rolling hills with trees in various shades of orange, red, and yellow. The entire scene is overlaid with a pattern of white, curved, semi-transparent bands.

2018

NEW YORK UPSTATE ASLA CHAPTER



US Patent D710,122 S; D711,174 S;
Canada @152498; 153909.

Waiting since 1962

For over 56 years, Victor Stanley has designed, engineered, and manufactured timeless site furnishings so you can bring communities to life. Our Perenne collection embodies elements in nature and classical settee furniture design while remaining slim, open, functional, and timeless.

Contact Andrew Hosmer at andrewh@victorstanley.com

VICTOR  STANLEY®

Create a timeless moment.®

VICTORSTANLEY.COM



UPSTATE IMPRESSIONS 2018 YEAR IN REVIEW

www.nyuasla.org

INQUIRIES AND QUESTIONS ABOUT THIS PUBLICATION SHOULD BE SENT TO:

ASLA New York Upstate Chapter
312 West Commercial St., East Rochester, NY 14445
Ph: 585-586-6906 | Fax: 585-385-6053
Email: nyuasla@riversorg.com

**Restoring the
*native landscape***

ernstseed.com

sales@ernstseed.com

800-873-3321



President's Message



Robert Bristol, RLA, ASLA
NY Upstate ASLA Chapter President

As a Chapter, we should take appropriate credit for leading national chapters in new Member attainment. This was a stated national goal? Retaining Members and attracting recent graduates is key! We seem to be delivering what our Members want! That is our job and we must continue to be necessary to their success. We should be proud of our leaders for their hard work and steadfast dedication. We have a superb team. I salute you all! This coming year should be wonderful. Our recent Member survey offers several desires of our Members and we will listen and try to constantly deliver. As Members we all can continue to be national role models! Congratulations on a fabulous 2018 result.

CONTENTS

4	NY Upstate Chapter ASLA Meet our Team The Executive Committee
6	Annual Awards Program
22	Education & Student Chapter Update Cornell University
26	Education & Student Chapter Update SUNY ESF
31	2018 Chapter Events & Socials
41	2018 Membership Survey
42	Trustee Report 2018
44	PARKing Day
48	New York State Council of Landscape Architects Legislation
50	Projects All Around Upstate
90	Pollinator Plantings Spread like Weeds!
94	Looking Forward to 2019



ASLA

**NEW YORK
UPSTATE**

Meet our Team

The Executive Committee

American Society of Landscape Architects is the professional Association for Landscape Architects in the United States, representing more than 15,000 Members. It promotes, advocates, educates and advances the practice of Landscape Architecture.

New York Upstate was the 13th chapter to be organized as part of the American Society of Landscape Architects (ASLA), founded on December 3, 1954. The Society's Chapter Executive Committee meets regularly to plan events, coordinate continuing education programs and plan advocacy efforts. NY Upstate ASLA promotes the landscape architecture profession and advances the practice through advocacy, education, communication and fellowship.

EXECUTIVE COMMITTEE MEMBERS 2018

President
President Elect
Trustee
VP for External Affairs
VP Communications & Information
VP Program Services
Treasurer
Secretary
Membership Chair
Rochester Section At-Large Member
Western Section At-Large Member
Central Section At-Large Member
Eastern Section At-Large Member
Southern Tier Section At-Large Member
HALS Coordinator
LACES Coordinator
Fellows & Scholarship Fund Chairperson
NYSCLA Representative
ESF Student Liaison
Cornell Student Liaison
TRO, NY Upstate ASLA Chapter Manager

Robert Bristol

Doug McCord

Michael Damico
Nicole Mix

Vincent Pietrzak
Sarah Costich King
Nicholas Schwartz
Sue Steele

Melanie Anderson
Natalia Cadige-Elmer
Liz Podowski King

Michele Palmer

Zakery Steele
Steve Lauzun
Michael Haas
Andrew Hart
Natalia Cadige-Elmer
James Fruechtl
Richard Rivers

NEWLY ELECTED FALL 2018

Sue Steele
Joy Kuebler

Nicole Cleary
Open

Ted Liddell

Kirsten Anthony Catellier
Daegan Von Swearingen



RIGHT: Executive Members at the Awards Event in February 2018. Right to Left. Bob Bristol, James Fruechtl, Melanie Anderson, Sue Steele, Michele Palmer, Doug McCord, Nicole Mix, Michael Hass, Natalia Cadige-Elmer, Vaughn Rinner, PLA, FASLA 2016 President ASLA, Nick Schwartz, and Michael Damico.

2019 EXECUTIVE COMMITTEE - VOTING MEMBERS



President
Robert Bristol



President Elect
Sue Steele



Trustee
Joy Kuebler



VP for External Affairs
Michael Damico



*VP Communications
& Information*
Nicole Cleary



Treasurer
Vincent Pietrzak



Secretary
Sarah Costich King



Membership Chair
Nicholas Schwartz



*Rochester Section
At-Large Member*
Ted Liddell



*Western Section
At-Large Member*
Melanie Anderson



*Central Section
At-Large Member*
Natalia Cadige-Elmer



*Southern Tier Section
At-Large Member*
Daegan Von Swearingen



*Eastern Section
At-Large Member*
Kirsten Anthony Catellier

Annual Awards Program

presented February 2018

The goal of the Annual Awards Program is to promote professional excellence in Upstate New York by acknowledging significant Landscape Architectural projects. The program recognizes a full spectrum of innovative projects executed by individuals, firms, agencies and academic institutions. The objective is to bring public attention to the outstanding services of Landscape Architects by honoring them with professional awards for projects that demonstrate a superior quality of design and execution.

The 2017 NY Upstate Chapter Design Awards Program received a total of 31 professional entries distributed among the five categories. The entries were judged by a multi-disciplinary Jury established by the Minnesota Chapter ASLA. The Jury awarded 10 projects.

The Awards were presented to winning firms at our Annual NY Upstate ASLA Chapter Awards Ceremony held at the Coltivare Culinary Center in Ithaca on February 9, 2018.

Thank you to the Members, friends, and colleagues who attended and made the event a success!

IN MEMORY

A special raffle was held at the awards ceremony in honor of Maggie Edelstein. The proceeds from the raffle were donated to a fund in support of Maggie's daughter Anabelle. Maggie passed in September 2017, among her many roles, Maggie was a Landscape Architect and active volunteer and Executive Committee Member with the Chapter. She is greatly missed and the Chapter was proud to honor her family with a donation at the event.





CATEGORIES

UNBUILT DESIGN >> Recognizes conceptual and developed designs prepared for a client, but never constructed.

RESEARCH AND COMMUNICATION >> Recognizes research projects that address challenges in the field of Landscape Architecture and projects that communicate history, or practice of Landscape Architecture.

BUILT DESIGN >> Recognizes all built projects including, but not limited to streetscapes, waterfronts, parks and recreation, commercial, and industrial projects.

PLANNING AND ANALYSIS >> Recognizes projects related to the planning and analysis of transportation systems, urban environments, and regional and local communities.

HISTORIC PRESERVATION >> Recognizes projects focused on historic preservation, restoration, rehabilitation, and projects related to the inventory of historic resources.

AWARD LEVELS

HONOR AWARD >> Highest distinction, recognizing projects that represent the highest professional standards. The Jury can choose to award only one per category.

MERIT AWARD >> Recognizes professional work of significant quality, innovation or professional impact. The Jury can choose to award the Merit Award to as many projects as they feel deserving.

INDIVIDUAL AWARDS >> Additionally, the NY Upstate ASLA Chapter is proud to recognize outstanding individuals, practitioners and students for their achievements in areas of design, leadership, ASLA Chapter involvement and other activities in the community related to the profession.

Annual Awards Program



DISTINGUISHED SENIOR PRACTITIONER AWARD >>

Recognizes an outstanding individual practitioner for achievements in three areas - design, leadership, and ASLA Chapter involvement.

Private Practice**Joseph G. Sporko, ASLA**

A Founding Principal of The LA Group, Landscape Architecture and Engineering, P.C., Joe has 38 years of experience managing all phases of practice including site analysis, master planning, conceptual design through construction documentation and construction phase services. Joseph G. Sporko has been a practicing licensed Landscape Architect since 1982. Joe first worked for the Centre Regional Planning Commission right in State College as their Landscape Designer. In the private sector, Joe moved to upstate New York working for a small landscape architectural firm and had the opportunity to be involved in the temporary facility planning for the Olympics in Lake Placid. With a lot of hard work and an acquired knowledge of the business, he became one of the founding owners of The LA Group in 1987. The firm was founded on the principles of environmentally sensitive design and soon grew to include Landscape Architects, Engineers, Environmental Scientists and Planners.

Academic Practice**Scott Shannon, ASLA**

Over Scott's nearly 30 year career as an academic practitioner at SUNY ESF in Syracuse, he has had many opportunities to seek and demonstrate leadership in service of his department, his university, and his profession. From the beginnings of his career onward, his professional strengths have always been grounded in his versatility and flexibility-- as a designer, teacher, scholar and researcher, and as a manager and administrator. Scott is the Associate Provost for Instruction and Dean of the Graduate School at the State University of New York, College of Environmental Science and Forestry.

DISTINGUISHED STUDENT AWARD >>

This award recognizes students who have demonstrated exceptional leadership and service within the Department of Landscape Architecture or in other activities in the community related to the profession.

**Mark S. Tepper,**

Distinguished Student, SUNY ESF

**Zeynep Goksel**

Distinguished Student, Cornell

DISTINGUISHED EMERGING PRACTITIONER AWARD

>> This award recognizes an individual who has demonstrated exceptional leadership and made significant contributions to the profession early in their professional career.

*Distinguished Emerging Practitioner***Natalia J. Cagide Elmer**

Natalia Cagide Elmer is a Landscape Designer and Environmental Engineering Consultant at Parsons Corporation in Syracuse, New York. After her initial schooling in forestry engineering at the Polytechnic University of Madrid, Spain, she then moved on to graduate with honors in 2014 with a Master's in Landscape Architecture (MLA) at the SUNY College of Environmental Science and Forestry, where she continues to return as guest studio critic and lecturer. Natalia is currently preparing to become a licensed Landscape Architect, and intends to focus her career on ecological restoration and urban forestry while implementing sustainability practice and biophilic design. She has a passion and commitment to the pursuit of harmonizing cities with their surrounding environment, using performative landscapes to enrich biodiversity and habitat while providing ecological services to the local community. In her free-time she enjoys singing with Oratorio Society Choir, cooking, and enjoying the great outdoors!

HONOR AWARD

Regional Green Infrastructure Showcase at RMSC

ROCHESTER, NY

BUILT DESIGN / HONOR AWARD

Barton & Loguidice >>

The Regional Green Infrastructure Showcase at the Rochester Museum & Science Center demonstrates the educational power of Landscape Architecture. Green Infrastructure solutions are infused into the RMSC campus empowering RMSC visitors to understand life-critical ecosystem services, and inspire them to further consider their own role as a steward of our planet.



MERIT AWARDS

Brickyard Trail

BRIGHTON, NY

BUILT DESIGN / MERIT AWARD

Bayer Landscape Architecture, PLLC >>

The Brighton “Brickyard Trail” is a multi-use trail that provides a direct pedestrian and bicycle connection between Town Hall on Elmwood Avenue and Buckland Park on Westfall Road. The trail extends 0.8 miles through a publicly owned parcel of land that once served as the source of much of Brighton’s raw clay – fueling the former brick manufacturing industry. The project includes trail and amenities design, historic research, and signage design.



Rochester Urban Skate Park Feasibility Study

ROCHESTER, NY

BUILT DESIGN / MERIT AWARD

Stantec Consulting Services >>

In a public-private collaboration with the Friends of ROC City Skate park, the City of Rochester hired the consultant to complete a feasibility study for a long-desired, urban park suitable for progression-oriented sports (skateboarding, BMX, roller blading, etc.) that may ultimately become one of the largest skate parks in the United States.



Clemens Square

ELMIRA, NY

BUILT DESIGN / MERIT AWARD

Stantec Consulting Services >>

Stantec developed a detailed concept design for the highly visible “Clemens Square” as part of Elmira’s \$10M Downtown Revitalization Initiative. The project included urban public realm design, community presentations, development of 3D models and photorealistic renderings, and became one of the community’s keystone projects for the initiative.



Schwartz Center for the Performing Arts Plaza

ITHACA, NY

BUILT DESIGN / MERIT AWARD

Trowbridge Wolf Michaels Landscape Architects LLP >>

The Schwartz Center Plaza project transformed a little used area into a lively public space that supports a wide range of programming. The new design is a highly permeable, open and flexible space that is inviting to the community. TWMLA provided leadership on programming, public outreach, design, and construction.



East Spring Street Green Infrastructure Improvements

WILLIAMSVILLE, NY

BUILT DESIGN / MERIT AWARD

Joy Kuebler Landscape Architect, P.C. >>

The Village of Williamsville had a vision for their iconic Historic Mill area that included a town center with plantings and pedestrian amenities that would reduce stormwater runoff. The resulting project included rain gardens, pervious paving, a green wall, an overlook deck, and interpretive signage creating a thriving commercial district and event space.

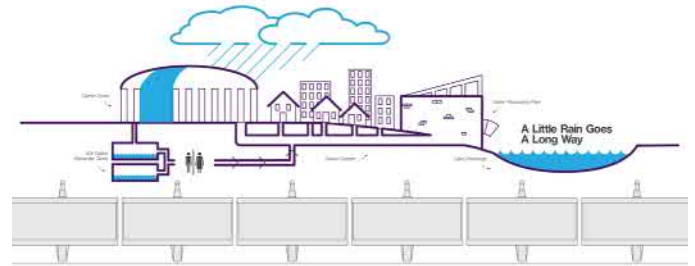


Syracuse University Carrier Dome Water Harvesting Project

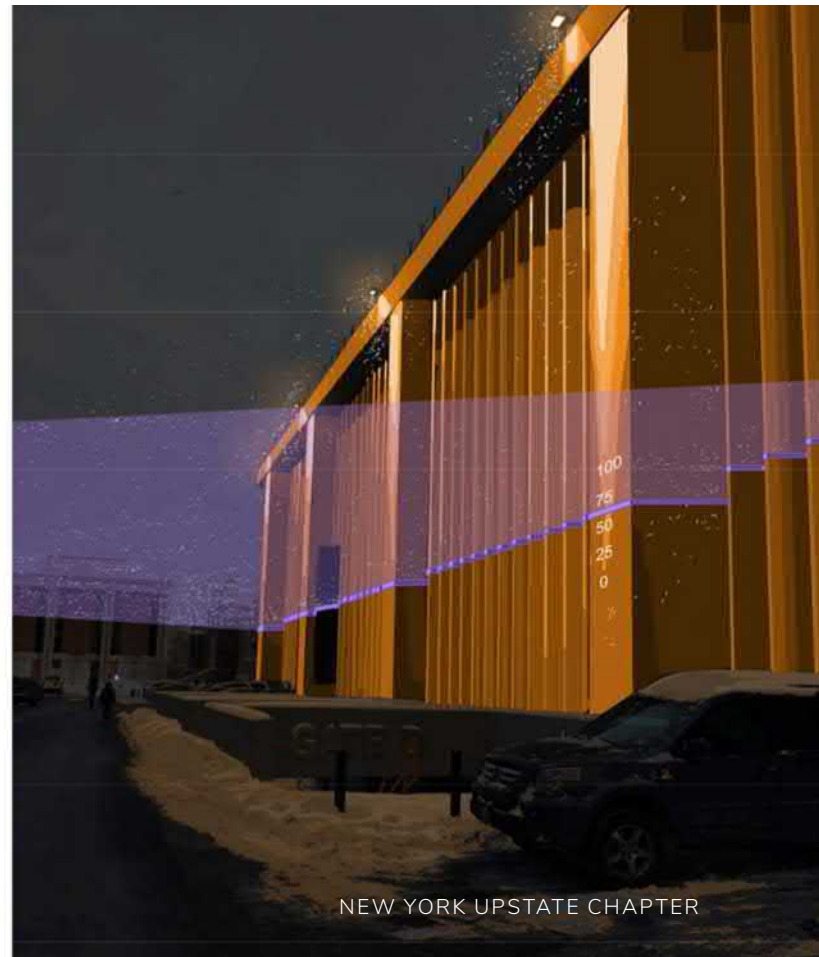
SYRACUSE, NY

BUILT DESIGN / MERIT AWARD

Environmental Design & Research,
Landscape Architecture,
Engineering & Environmental Services, D.P.C. >>



The purpose of the Carrier Dome Rainwater Harvesting System, as a green infrastructure project, was to exercise new configurations in urban stormwater management systems in concert with the shift in traditional stormwater paradigms. At a regional and national level, the paradigm shift accentuates the change from water disposal and treatment to conservation and recycling of resources. The project provided a two-fold benefit, one as an environmentally impactful and sustainable project and another as an opportunity to communicate its story to the masses who utilize the stadium located on Campus.



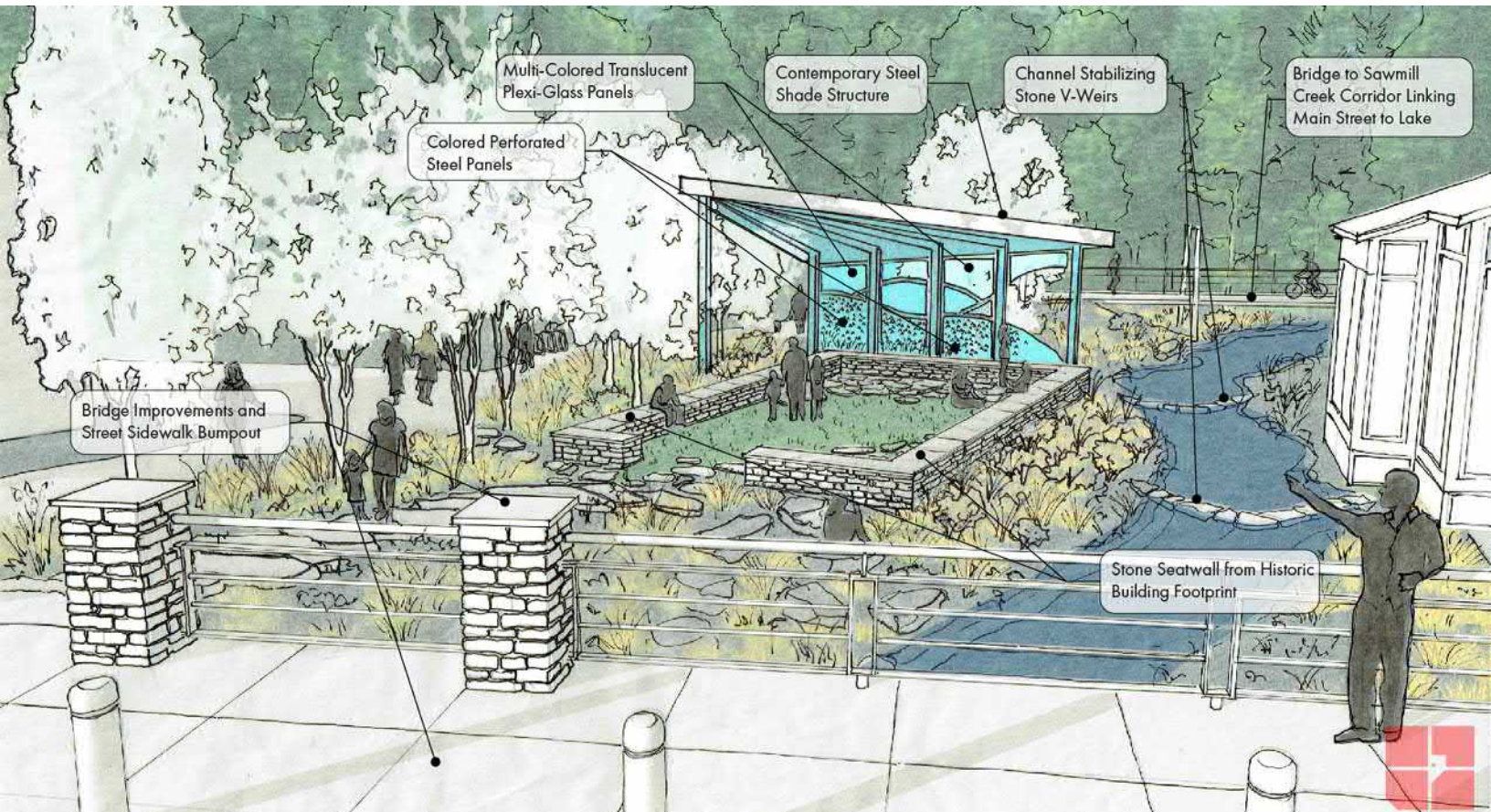
Gooseberry Creek Revitalization Strategy

TANNERSVILLE, NY

BUILT DESIGN / MERIT AWARD

PLACE Alliance »

Gooseberry Creek Revitalization Strategy was developed through a collaborative planning/design process rooted in interactive community feedback and science. The strategy creates connections between existing and proposed recreational assets surrounding the restoration of Lake Rip Van Winkle and Main Street, creating opportunities for environmental education, recreation, and exploration of nature.



Geddes Brook and Ninemile Creek Wetland Restoration

SYRACUSE, NY

BUILT DESIGN / MERIT AWARD

Parsons >>

An ecological restoration project consisting of 45 acres of wetlands and floodplains, resulting in a biodiverse ecosystem connected to Onondaga Lake. This endeavor aimed to produce a rich mosaic of habitats for wildlife, improve water quality within the watershed, and provide ecological services and recreational opportunities for the local community.



Mount Merino Modern

HUDSON, NY

BUILT DESIGN / MERIT AWARD

Wagner Hodgson Landscape Architecture >>

The Mount Merino Modern home is a 4.2 acre retreat perched on top of Mount Merino, overlooking Hudson Valley farmlands and the Taconic range to the east. While the main house, a 2,500 sf modern glass pavilion, received minor interior renovations, the landscape architect and architect expanded the building and landscape to include a new swimming pool, guesthouse, workshop, terraces, and garden spaces. Taking cues from architectural geometries and working closely with new owners, the original lawn terrace is restored. A grassland meadow embraces the lawn and gravel plinths of the house and pool terrace. The planar qualities of the architecture are distilled into the landscape, providing an unembellished and ephemeral foreground to the long rolling agrarian view beyond. The new guesthouse is organized off the arrival court to provide its own private garden. A similar minimalist pallet of rectangular lawn panels, ornamental grasses, gravel, and stone pathways creates a unified landscape that stitches together each phase into one harmonious whole.



Education & Student Chapter Update

Cornell University Department of Landscape Architecture

2018 was filled with many accomplishments, milestones, and distinguished awards for the Cornell Student ASLA Chapter and the Cornell Landscape Architecture Department.

James Fruechtl,
NY Upstate Chapter ASLA Cornell Liaison

'Touriscape' in Torremolinos, Málaga

Early in February, Associate Professor Maria Goula and author of the concept "second coast" gave one of the keynote speeches on her research of coastal tourism at the Touriscape Conference. At the same conference, 2017 MLA students Lauren Butts and Alice Sturm presented their works on Coastal Resiliency in New Jersey and Charleston, South Carolina.

Healthy Port Futures Team

In March, the Great Lakes Protection fund awarded Cornell Landscape Architecture's Brian Davis and Sean Burkholder from University of Pennsylvania and formerly of University of Buffalo, with a \$1.6 million grant to develop alternative methods for managing dredged sediments. Their three-year design research project will look at the beneficial uses of the dredged material and positioning it as building block for the community and the ecology.

Waterfront Resilience Summit

Early in October, work by Josh Cerra's students in the Climate Adaptive Design Studio was featured at the first-of-its-kind Water Resilience Summit and High Water Festival in Kingston, New York. The festival showcased the progress that has been made to revitalize the Kingston waterfront while adapting to sea level rise and climate change. The students presented their designs to enhance the city's resiliency and protect its natural assets against project flooding and inundation.

ASLA National Conference

Later in October, the 2018 ASLA National Conference was held in Philadelphia, Pennsylvania. The conference was attended by many Cornell Landscape Architecture students, and the Cornell tailgate held at The Center for Architecture brought together alumni, students and faculty. During the conference, MLA Students Tess Ruswick and Kari Spiegelhalter were presented with a Student ASLA Honor Award for their research-based guide titled "A Student's Guide to Environmental Justice," which provides practical approaches for integrating environmental justice rights into landscape architecture.



Above: Cornell LA Course researching uses for dredged material in Galveston Bay, Texas

LABASH Conference

Students Present on Environmental Justice

Cornell students attended the 47th Annual LABASH Conference, hosted by Penn State University this past spring. At the Conference, Cornell MLA students Tess Ruswick and Kari Spiegelhalter presented a session on Environmental Justice.

Cornell CALS Landscape Architecture seniors are working side by side with the U.S. Army Corps of Engineers to integrate ecology and engineering performance to protect Galveston Bay in Texas. During the month of April, Cornell students collaborated with the Engineering with Nature Program of the U.S. Army Corps of

Engineers at the Research and Development Center. Their focus was to examine ways to integrate natural and artificial systems in order to protect against flooding, create a public use, maintain navigation and improve environmental health. Strategies developed by students included reusing the dredged materials to create an island archipelago and restore wetlands, and utilizing tidal structures to dissipate wave action and create a resilient coastal dune ecosystem. Later in May, students made a final presentation to Corps engineers and project managers.



Above: LABash 2018 Environmental Justice Group Session.
Right: LABash 2018 Environmental Justice presentation.



Urban Eden Crab Apple Day

On November 8th, the Urban Eden Class rolled up their sleeves and gave back to the community of Ithaca by installing and expanding a grove of crab apples on the west side of the city. Fifteen bare root trees were planted by students with assistance from the Ithaca Department of Public Works, giving them hands-on experience while enhancing the community of Ithaca. The event was also attended by the City of Ithaca Mayor, the City Forester, the Ithaca Garden Club, and local media.

End of Semester

CU LA Department Gathering

In mid-December, the End of Semester Gathering was held at the Big Red Barn on the Cornell Campus. The students and faculty enjoyed the good company of one another and reminisced over the past semester and events to come.



Above (Left and Right): Urban Eden Crab Apple planting day.

Cornell Landscape Architecture Awards

2018 ASLA National Honor Award

Awarded to Tess Ruswick Cornell MLA '18, Kari Spiegelhalter Cornell MLA '18, and Patricia Noto RISD MLA '18 for developing 'A Student's Guide to Environmental Justice,' a research-based guide for integrating environmental justice prerogatives in Landscape Architecture Design.

ASLA Council of Fellows

Professor Tim Baird joined the Council of Fellows at the ASLA National Conference.

2019 Frederick Dreer Award

Awarded to Eve Anderson for "Vertical Landscapes: Exploring Colombia's Urban Forestry," to Li Bai for "Urban Pentimenti: Investigation of Italian Landscape Palimpsest from Roman Era to Renaissance", and to Jiamin Chen for "Exploring Landscape Phenomenology: Intersecting Spirituality and Material Practice."

2018 E. Groton Davis Travel Fellowship

Awarded to Adriana Hidalgo (Landscape Architecture) for studies on the role of horticulture in remediating environmental degradation in Haiti and the Dominican Republic, and Sonam Sherpa (Horticulture) for studies on andisol soils and their agroecosystems in Japan.

APA National Student Design Competition

Awarded to Landscape Architecture student Kari Spiegelhalter MLA '19, along with planning students Anna Callahan MRP '18, Thomas Pera MRP '18 and Hannah Plummer MRP '18. Their design, "NOLA Shares" focused on strengthening social and economic bonds between the long-time residents and the new population of the Iberville community in New Orleans.

Council of Educators for Landscape Architecture (CELA) Honors
Peter Trowbridge was honored as one of the newest CELA Fellows.

CELA 2018 Excellence in Research and Creative Work Award, Junior Level

Awarded to Assistant Professor Brian Davis, Cornell University

CELA 2018 Excellence in Design Studio Teaching Award, Junior Level

Awarded to Assistant Professor Jamie Vanucchi, Cornell University



RUNNING TRACKS
Rekortan

GAME COURTS
Laykold

This is what we do.

Nagle
ATHLETIC SURFACES

www.nagleathletic.com **800-388-5713**

NEW INSTALLATIONS • REPAIRS • REFURBISHING

Education & Student Chapter Update

SUNY College of Environmental Science and Forestry Department of Landscape Architecture

It has been an exciting and busy year in the Department of Landscape Architecture. The Department's BLA and MLA programs underwent review for reaccreditation by the LAAB this past March. The last reaccreditation review was in 2012. Both programs received full 6 year reaccreditation.

Doug Johnston, ASLA

ESF Dept. of Landscape Architecture Chair

Natalia Cadige-Elmer, ASLA

NY Upstate Chapter ASLA Cornell Liaison

Awards

MLA Graduate Student Nicole Rivera-Ramos received an Award of Excellence in the 2018 ASLA Student Awards Competition for her work on agricultural and community redevelopment to make Puerto Rico become more resilient. MLA Graduate Chris Anderson was recognized with a 2017 ASLA Design Honor Award for his Capstone Project on the Gowanus Canal in Brooklyn, NY. Two teams of students under Assistant Professor Anne Godfrey's Spring Studio placed in the top 25 of the international Land Art Generative Initiative (LAGI) competition. Their work has been featured on the LAGI website and blog. Associate Professor Tim Toland received the SUNY Chancellor's Award for Service in recognition of his history of contributions to the department, college, and the profession.

In the Studio

The Department continues to work cooperatively with communities and organizations across the state. Last fall semester Wendy Andringa served as the William Kennedy Chair Visiting Instructor. Wendy, Instructor Jocelyn Gavitt, and the 4th year BLA students studied climate resiliency planning for Vineyard Haven on Martha's Vineyard.

In the spring semester, Professor Emanuel Carter and Jocelyn Gavitt along with the third year BLA students worked on a project involving the City of Rochester and The Nature Conservancy envisioning reuse of vacant lots in the Joseph Avenue Neighborhood. They also



developed concepts for redevelopment of the commercial core of the Hamlet of Mattituck, on Long Island.

Additionally, Assistant Professor Anne Godfrey taught a thematic studio that participated Land Art Generator Initiative Competition Studio, Melbourne Australia: LAGI is a famous international design competition that addresses issues of climate change through utilizing emergent technologies with a goal for energy production.

Associate Professor Robin Hoffman taught an MLA studio in the fall semester examining long-term planning for parts of the much improved (but still a work in progress in the tributaries) of Onondaga Lake, and is pursuing opportunities for visual resource management research and practice.



Marshall Hall Renovations

The SUNY Construction fund has allocated resources to advance the planning for a complete renovation of Marshall Hall. We are working with the design team and are excited about the potential to realize much needed updating and improvements to our facilities, as much as we love the charms of Marshall Hall! Related to facilities, the College allocated funding for the creation of a digital fabrication lab, initiated and led by the Department. The facility gives students (and faculty!) access to high-end computing, 3D printing, laser cutting and CNC routers, in support of their studio and capstone projects.

New Faculty

This spring we successfully completed searches for two faculty. Joining us in August was Dr. Rachel Leibowitz, and Professor Aidan Ackerman. Dr. Leibowitz was most recently with the Illinois State Historic Preservation Office and has teaching experience with the University of Texas. Her research and scholarly focus is in cultural landscape conservation, including Native American and other under-represented populations. Professor Ackerman was most recently Director of Digital Media and Landscape Architecture Faculty at the Boston Architectural College. He brings expertise in design and planning, digital modeling and representation, and digital workflows. Both will be bringing their talents to studios and other classes. We were also joined this fall by Dennis Carmichael as this year's William Kennedy Chair Visiting Professor. He taught in the Fourth Year Studio and in Planting Design.



Faculty Highlights

Professor Carter is working on economic development efforts in rural sectors of the state as part of the “New Forest Economy” bringing green industrial processes for wood products processing, and continues his collaborations with faculty and staff from the University of Madrid and the Center for Environmental Studies, City of Vitoria-Gastiez, Spain through which he has served as co-instructor on workshops on green belts in urban areas, and given presentations at international conferences.

Assistant Professor Anne Godfrey is making progress on her book on photography and landscape architecture, conducting research with Landscape Architecture firms, and presenting her work at the Council of Educators in Landscape Architecture conference this spring.

Professor Matt Potteiger’s work linking design and food systems continues to keep him active with numerous presentations and papers at regional and national conferences including the Culture of Cultivation: Designing with Agriculture symposium organized by the University of Pennsylvania. He has also been appointed as a Visiting Teaching Professor in the Department of Public Health, Food Studies, and Nutrition in the David B. Falk College of Sport and Human Dynamics at Syracuse University. He is completing work on “FoodPlan CNY,” where he is Principal Investigator with Co-Pi, Evan Weissman, Syracuse University Food Studies Program funded by the Onondaga County Agricultural Council and contributed to a funded proposal to the Refugee Agricultural Partnership Program. U.S. Department of Housing and Urban Development.

Festival of Places

This year’s Festival of Places featured work from the Off-Campus Program with teams reporting from Reykjavik, Iceland; Edinburg, Scotland; Berlin, Germany; and Barcelona and Madrid, Spain. The George Earle Lecture was given by Thaisa Way. We are working on plans to celebrate and reflect on the Off-Campus Program and its impact on students as it approaches its 50th anniversary in 2020.

Off- Campus Program

While the Off-Campus Program is perhaps the most visible and well-known part of the program’s international activities, faculty and students engage in several other international exchange and practice opportunities. Faculty and students in the department have engaged in exchange workshops with the University of Applied Sciences-Osnabruck Germany (2013, 2014, 2016, 2017, and again this September). Faculty (Emanuel Carter and EFB faculty Stewart Diemont) and students launched a “Maymester” class between ESF students and staff and interns at the Center for Environmental Studies, City of Vitoria-Gasteiz, Spain.

SUNY Global is partnering with the Kellogg Foundation and several other international and local NGO’s and Haitian Universities to develop sustainable development practices that will address environmental and social challenges in the Haitian region of Archaie through education, hands-on projects and building community capacity through involvement in these activities. Faculty and students from multiple SUNY campuses are involved in various ways depending on their subject areas, expertise and the match with local needs and student learning outcomes. SUNY ESF through DLA faculty Members Scott Shannon, Associate Provost and Dean, Graduate School, and Maren King, Director of the SUNY ESF Center for Community Design Research, are Members of the core team organizing the project, and a studio examining preliminary planning and design issues was conducted in the fall of 2017.

The Center for Cultural Landscape Preservation (CCLP), the Center for Community Design Research (CCDR), and the Center for Urban Environments (CUE) provide a large variety of opportunities for faculty and students to learn through practice and service.

Center for Cultural Landscape Preservation

The CCLP, co-directed by John Auwaerter and Distinguished Emeritus Professor George Curry is closely affiliated with the National Park Service's Olmsted Center through a cooperative agreement that provides opportunities for students and faculty to work on nationally significant landscape conservation issues through studio projects, graduate capstones, and funding for graduate and undergraduate assistantships. The Center has involved students and faculty in a number of projects this year including the Gettysburg 1st Day 1st Corps Battlefield Planning and Design, the Blow Me Down Farm at Saint-Gaudens National Historic Site in New Hampshire, Rose Hill in Geneva, NY (through a contract with the Geneva Historical Society), and a number of other ongoing projects.

Center for Community Design Research

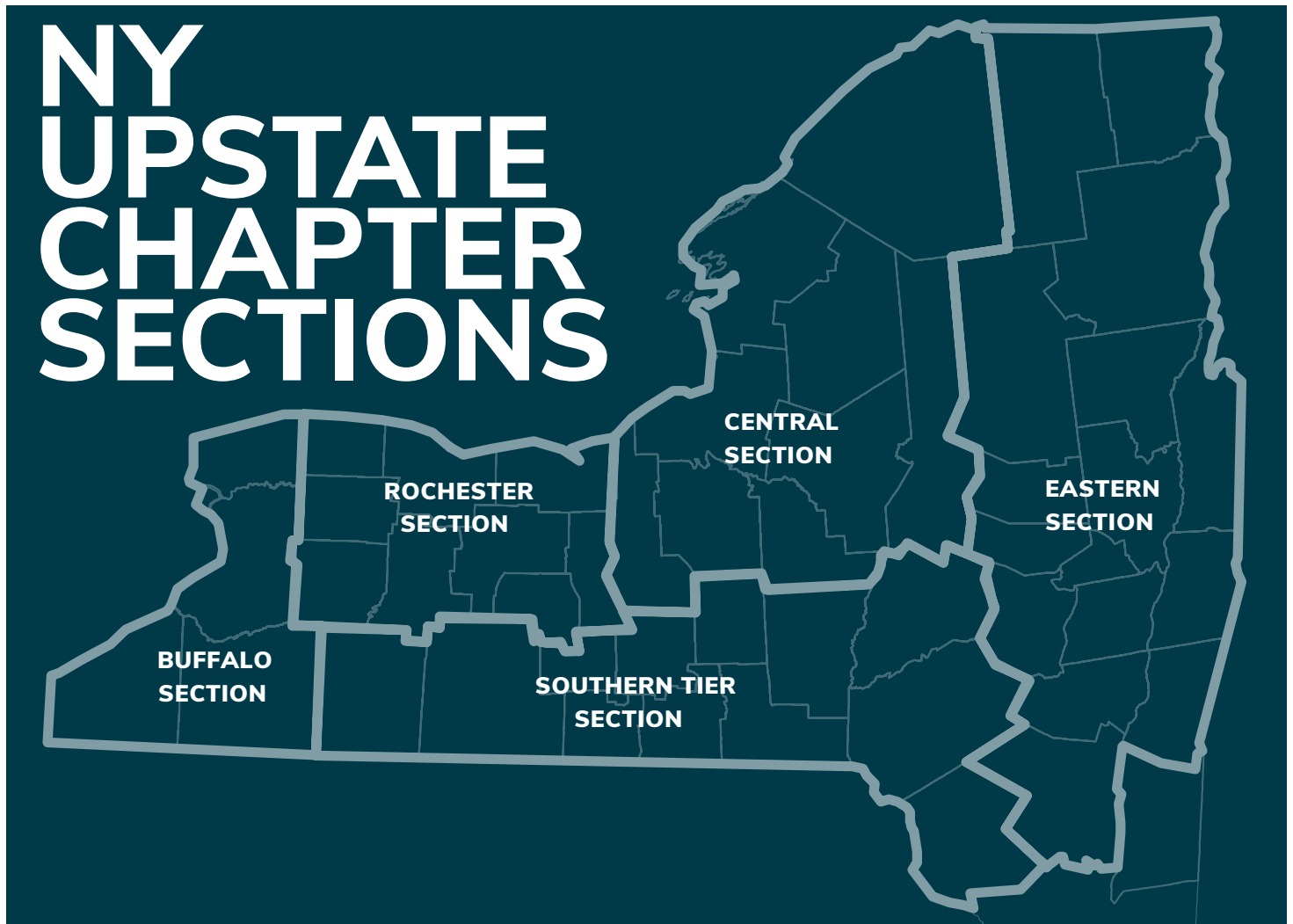
The Center for Community Design Research is a premier source for community-based learning and service. Directed by Associate Professor Maren King, it coordinates and provides opportunities for faculty and students to engage in projects and research on the reciprocal effects of environmental change on communities. The CCDR has organized the Visioning Voices Community Design Speaker Series – Community design education program organized in collaboration with a steering committee including representatives of Northeast Hawley Development Agency (NEHDA), Northside Urban Partnership, Syracuse Neighborhood and Business Development, Syracuse Parks and several city neighborhood residents/Members of TNT sectors. This year three events have been organized on the topics of the Role and Value of Parks (Sept 2017), Neighborhood Safety through Design and Social Connections (Nov 2107) and Lifelong

Play (March 2018). Each event is hosted by a different neighborhood and includes a walking tour, a presentation by a featured speaker, community dinner and a workshop. MLA student Shagha Shahhossieni, BLA student Savy Kep have contributed to background research on effective community design education programs for community Members through evaluation of the Visioning Voices program to date. Preliminary findings were presented at the EDRA Conference June 6-9, 2018 and a journal article is intended. Professor King also published a chapter in a new book [Design as Democracy: Techniques for Collective Creativity](#), edited by David de la Pena, Diane Jones Allen, Randolph T. Hester, Jr., Jeffrey Hou, Marcia J. McNally, published by Island Press.

The Center for the Urban Environment

Directed by Associate Professor Margaret Bryant CUE is developing a focus on environmental design issues in metropolitan areas. Margaret has been on a sabbatical and teaching leave this past year working to develop the center as part of the college's strategic initiative highlighting the important environmental issues and work in urbanized areas. The center is building networks of ESF alumni, students, and faculty from across the college. Through a survey of alumni, Professor Bryant gauged the extent of alumni practice in urban sustainability and urban environmental quality. She has also been working with a group of students from across the college to identify urban related courses, and opportunities for new courses, research, and collaboration.

2018 Chapter Events & Socials



Have an idea for an event or gathering for 2019? Let us know!

Buffalo Section	Melanie Anderson	mmanderson@clarkpatterson.com
Rochester Section	Ted Liddell	tliddell@bergmannpc.com
Central Section	Natalia Cadige-Elmer	natalia.cagide-elmer@parsons.com
Eastern Section	Kirsten Anthony Catellier	kcatellier@studioadpc.com
Southern Tier Section	Daegan Von Swearingen	dvonswearingen@gmail.com

Buffalo Section » **Melanie Anderson**, NY Upstate Chapter ASLA 2018 Section Leader

The year started off with a collaboration project with Tracie Hall of the USGBC and Melanie Anderson, ASLA Section Leader for the Buffalo Region. Tracie Hall was preparing a memory garden for the Colden Elementary School in Springville, NY. Just last year, Colden Elementary lost their only janitor on staff, to cancer. Weeks later, their new janitor had died from a car accident. The memory garden was meant to be a team effort by the students and volunteers of the area. Melanie assisted with a small “Lego workshop” with the 5th grade garden committee, teachers, principal and Mrs. Hall. She showed the group what plants best fit the senses of memory and most suitable for survival in their region. Melanie also produced a presentation board for the school to put on display, in anticipation for the complete garden. Construction of the garden has yet to be determined based on funds and site amenities.

Landscape Forms came to Buffalo at the end of May to host a PDH seminar on lighting. Their lighting specialist, Chad Gleesing, gave a profound presentation; all while, Big Ditch Brewery put together a great spread of food and beer pairings. Doreen from Landscape Forms coordinated attendance and invitations through Melanie and Dave Kenyon from Wendel Companies. The turn-out was better than expected and everyone had time to meet, chat and get to know one another – just in time for the next happy hour!

Al Key of Deep Root, came to Buffalo’s micro-brewery, Big Ditch, for a Happy Hour PDH in June. It was an overall success. Hosted by ASLA, with assistance of friends at Wendel Companies, the event stirred interest and conversation for more “get-togethers” in the future. In which case, our next event will be more of a Design/Share happy hour. It will include a relevant PDH topic that is geared towards a design discussion. This will allow us to share our tips and tricks that can help each one of us excel as individuals and as a team. If there’s one thing to take away from 2018 in Buffalo, it’s that no matter where you stand as a designer or Landscape Architect, we are all very much alike and enjoy similar activities. It just so happens that the activities we bond over are drinking while learning.

Cheers! To many more socials to come...



Rochester Section » Sue Steele, NY Upstate Chapter ASLA 2018 Section Leader

This past year we organized two events, offering opportunities to socialize and earn professional development hours in Rochester.

The year kicked off in March as we cosponsored the Community Design Center of Rochester's Reshaping Rochester Lecture Series and hosted a welcome reception at Ox and Stone with guest speaker, Mark Dawson, FASLA managing principal at Sasaki. Mark's lecture 'Exploring the Spaces In-between' the following night focused on civic park and open space design over several decades, looking at how they have/can/will influence our economy, community and the environment. The presentation and discussion was meaningful for attendees, as the City was recently awarded \$50M to revitalize the Genesee Riverfront through the ROC the Riverway planning initiative.



Building on this theme, we organized a single day seminar focused on the Genesee Riverfront development in July. The seminar started indoors with classroom style sessions and then moved outdoors for a bike tour along the River, and we concluded the program with a social hour at Bar Bantam at the Metropolitan. Attendees learned about the successes of various past planning initiatives and development projects, and were given the opportunity to discuss the current and future plans for development along the Genesee River. This program was our first to successfully partnered with AIA Rochester and NY Upstate APA, offering continuing education credits to our allied professionals, and advancing the dialogue between disciplines. We had a diverse mix of attendees, participation from the City of Rochester, and presentations from local and regional professionals. Thank you to all who attended and volunteered, making this event a success!



Eastern Section » Liz Podowski King, *NY Upstate Chapter ASLA 2018 Section Leader*

Throughout 2018, the Eastern Section partnered with LocalxDesign to host year-round events celebrating design in the Capital Regions.

In February, we toured Albany's new skate park in Washington Park with the lead designer, Kanten Russell, local skateboarders, and City officials. In May, Historic Albany Foundation's Dan Palmer led a tour of the Empire State Plaza's diverse outdoor spaces.

In June, we embarked on a walking tour of downtown Albany's #CapitalWalls murals with the artists and local sponsors - Albany Center Gallery, Albany Barn, and ParkAlbany. And, in September, we biked the Hudson River trails with local engineers working to increase connectivity along Albany's waterfront.

In October, the Eastern Section hosted a happy hour and PDH with Landscape Forms. The event took place in Albany and focused on LED lighting solutions for pedestrian and pathway lights. Attendees enjoyed free food, drinks, and an opportunity to network with other local Landscape Architects!

Looking forward to 2019, we are excited to welcome Kirsten Anthony Catellier as the new Eastern Section Chair.





Above and Left: LocalxDDesign-Capital Walls Mural Tour
Above Top: LocalxDDesign-Albany Skate Park.

Central Section » Natalia Cadige-Elmer, NY Upstate Chapter ASLA 2018 Section Leader

Franklin Square

Vincent Pietrzak, Treasurer, Event Organizer

On May 11th, the Central Chapter Section held a continuing education course on the historic Franklin Square Neighborhood. The program was presented by Steve Buechner, RLA, former Principle of Reimann-Buechner Partnership and lead designer during the redevelopment project, which was completed in 1993. Steve discussed the history of Franklin Square and looked back after 30 years at the successes and failures of this urban revitalization project. There was a great turnout with 27 people taking part in the walking tour. The event concluded with a happy hour at the Spaghetti Warehouse. It was good to see old colleagues and friends.

A special thanks to our speakers, Steve Buechner, Douglas Sutherland and Robert Hamlin.



Emerging Professionals

Daegan Von Swearingen, Emerging Professionals Leader

The NYUASLA Emerging Professionals met a total of 10 times this last year bringing together a small group of early career professionals. Discussions were always lively and covered many topics, beginning mostly in early 2018 around LARE preparation and as the year progressed it frequented individual projects and beyond! The group formally welcomed the ASLA Student Chapter of ESF to join us and discussed setting up a classroom appearance/panel discussion for upcoming emerging professionals meetings in the coming year.



Top, Bottom and Left: Franklin Square Event



Southern Tier Section » Michele Palmer, *NY Upstate Chapter ASLA 2018 Section Leader*

Marvin I. Adleman
Annual Memorial Lecture Series

Cornell alumnus Michael R. Van Valkenburgh endowed an Annual Memorial Lecture in honor of the late Marvin I. Adleman, Professor Emeritus of Landscape Architecture. Each year a prominent Landscape Architect will be invited to campus to meet with students and give a public lecture about his or her work. Van Valkenburgh gave the inaugural lecture on Sept. 20, 2018.

Adleman, a distinguished Landscape Architect, taught for 36 years at Cornell. He was a leader in the Landscape Architecture Program for

most of his tenure until his retirement in 2008. Prior to joining the Cornell faculty, Adleman worked at Sasaki and Associates in Boston before starting his Landscape Architecture Practice in Philadelphia. In 1992, he was named a Fellow of the American Society of Landscape Architects and was awarded the society's prestigious Jot D. Carpenter Teaching Medal in 2004. Adleman was also awarded several NY Upstate Chapter Awards, of which he was very proud.



mm
cité

7

mmcite.com

Project: Hoboken Southwest Park
Architect: Starr Whitehouse
Location: Hoboken, NJ

2018 Membership Survey

Nicholas Schwartz, *Membership Chair*

In 2018 Executive Committee sent out a Member Satisfaction Survey. The feedback we received was used by the Committee at our annual Chapter Retreat in October as we looked ahead and developed our focus and programming for 2019.

We wanted to share the highlights of the Membership Survey that was distributed last August and September:

- We received responses from 53 Members which equates to approximately 23% of the Membership. The results were distributed fairly evenly between how long a respondent has been a Chapter Member.
- 71% of the respondents were Registered Landscape Architects.
- Approximately 50% of the respondents have been a volunteer or Executive Committee Member.
- The top 3 things the Members valued most about the Membership were 1) PDH opportunities (76%), 2) Events and Social Opportunities (43%) and 3) News and Information (28%).
- The top 3 things the Members valued least about the Membership were 1) *Year in Review* (60%), 2) Design Awards (26%) and 3) Advocacy (19%).
- The most popular events in 2018 were the Annual Awards Celebration (45%), the Embracing Rochester Riverfront (32%) and Local Section Social Gatherings (25%). More than 25% of the respondents did not attend an event in 2018.
- For those that did attend an event, the program content (55%), networking (51%) and PDH (45%) were things they like the most about the program.
- 81% of the Members learned about Chapter events through email, followed by the website (23%) and word of mouth (23%).
- 60% of the Members preferred a single day program over an Annual Meeting with more than 26% having no preference.
- Other items of note were the cost of events for younger professionals and smaller practitioners and the geographic challenges of single day events.



**Barton
& Loguidice**

Engineers, Planners, Landscape Architects & Environmental Scientists

Rochester • Syracuse • Albany • Buffalo • Binghamton • Newburgh
New Paltz • Somers • Ellenville • Watertown

www.bartonandloguidice.com

Trustee Report 2018

Doug McCord, *Trustee*

It is with some sadness and some regret that I write this final report as your Trustee for the New York Upstate Chapter. It has been my pleasure to serve and I hope I have been effective in communicating your needs, wishes and desires at the National level at our twice-yearly meetings, periodic Board of Trustees teleconferences, and other activities. It has been 3 years that have flown by but in that time I was able to help with some rather big decisions and events at the National Office.

Branding In the course of one year, we undertook an all-new rebranding effort, hired an outstanding consulting firm, and were able to produce a new logo that was both reminiscent of the past and yet brought to our organization a new and fresh look, something we felt we needed for a while. Discussions continue on issues such as the use of the logo by firms as well as Firm/Group Membership versus Individual Membership.

Promoting Diversity We wrote new and revised policies for several issues promoting diversity in the profession – our profession diversity should mirror that found in the general population; promotion of sustainable urban growth and development; and allowing International Student Membership.

New Advisory Committees We created two new very important Advisory Committees at the National level, one for students and the other for Associate Members, that is to say, emerging professionals. These are very important because, although our NYU Chapter Membership is growing, this is not the case across the country with many other Chapters, and especially in the categories of Student and Associate Membership. These committees meet monthly (via teleconference) and gather information on the problems they face in the profession, limitations to Membership, and what they see for the future. The committees have been blessed with some outstanding leaders who have very effectively communicated their ideas to the Board of Trustees.

Climate Change Policy We formulated a revised policy on climate change, identified positions we support on the various issues, and summarized how we can address the issues in things we do every day in our profession. We developed an approach to the various issues including rising sea level, extreme weather events, and plant species migration due to a warming climate. We continued to monitor the climate change issues closely for the past 3 years as ASLA joined the Blue Ribbon Panel on Climate Change, and battled several issues at the National level brought about by the new administration.

Licensure Committee Lastly, I will continue on as a Member of the Licensure Committee, at least for the next couple years, as this is an issue I have been involved with for many years, mostly at the state level. We have developed a variety of tools and methods Landscape Architects can use in their own state, to fend off the various battles that threaten the profession and licensure, including a recent very strong effort to deregulate many professions in the misguided belief that such regulations limit access to work for people. Our position is, of course, that it is the licensure itself that assures that the consumer will receive designs that will protect public health, safety, and welfare.

Finally, please continue to keep doing what you've done so well these past 3 years! Attend our NY Upstate Chapter events. Participate in the meetings. Volunteer to help out with the meetings and events in your area. An organization like ours is firmly based on individuals such as you who bring your energy, expertise, and ideas to help. We, as an organization, are only as vital as the next group of leaders that come forward to begin the next chapter in the life of our important organization.

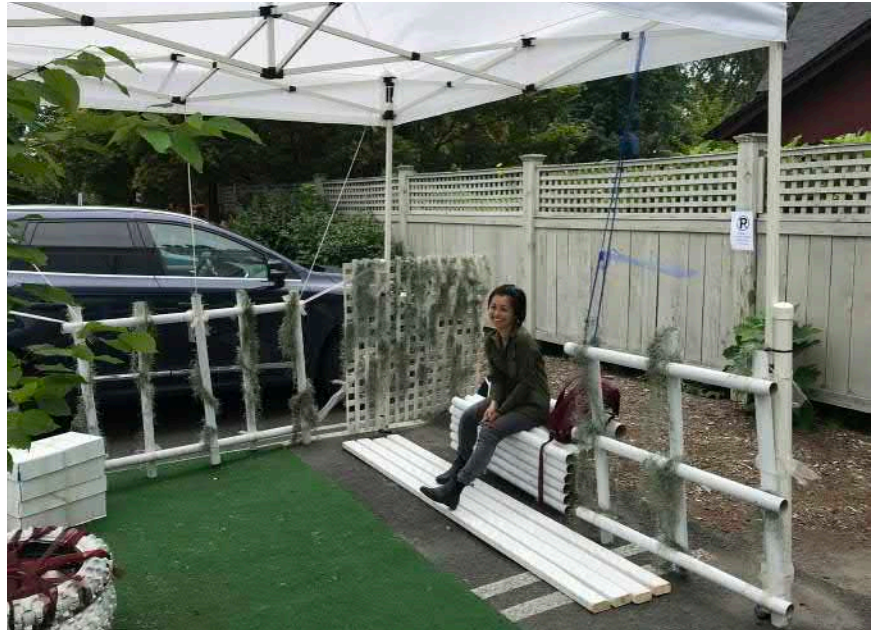
The future is bright! I am so proud to stand among those of you who have stepped forward over the past few years to help take that next step.



PARKing Day

Cornell University »

In September, the Student Chapter reimagined a parking space in front of Cornell's Big Red Barn as a parklet of Repurposed and Reused items. The installations served as a white canvas for passersby to write down their thoughts on environmental consciousness. The furnishings and elements were constructed out of collected byproducts. Benches and vine trellises were fashioned from plotter tubes and cushioned seating was created with tires filled with styrofoam. The planning began in the spring with a design charrette in coordination with the NY Upstate Chapter ASLA. Construction and plant materials were gathered by the students throughout the year and donated from local Landscape Architects and the Cornell Horticulture Department.



SUNY ESF »

The students' parklet was located on E. Genesee St. in Hanover Square. The parklet was a vision of Hanover Square converted completely into a pedestrian space, with all the parking spots removed. Their design included hops as a tribute to their historic importance as a cash crop in CNY, and the growth of the craft beer industry in this region.

The students had a great time interacting with curious onlookers and sharing with them what we were doing, the message of PARK(ing) Day, and our vision for a car free Hanover Square. They were especially excited to speak with several local business owners and government officials, and to share their vision with them as well.





PLAY with Custom

#shapedbyplay



1 800 726 4833
www.playgroundinfo.com



Parkitects

NY State Council of Landscape Architects

Legislation **Michael Damico**, NY Upstate Chapter ASLA 2018 Section Leader

Pam Lester, NYSCLA President

2018 saw many politically nuanced occasions, both nationally and locally. It was the last year of the State's legislative cycle - a cycle runs for two years - and this time we celebrated. The best attended Lobby Day we have had to date! NYSCLA Board Members, coupled with representatives from both the Upstate and Downstate ASLA Chapters continued the push on our legislative agenda. We thank everyone for their hard work and support.

2018 Legislation Agenda

Complete Street Design Principals S1801/A6772

Legislation sponsored by Senator Kennedy (Upstate-Buffalo) and Assemblymember Ryan (Upstate-Buffalo). A bill expanding where and when Complete Street Design Principles may be used in circulation design/maintenance projects.

The bill died in Committee within both Houses.

Green Roof Standards S5652/A2843 Sponsored by Senator Klein (Downstate-Bronx) and Assemblymember Dinowitz (Downstate-Bronx) this legislation codifies that design and certification standards for green roofs would be developed as well as providing tax credits.

The bill died in Committee within both Houses.

Urban Open Space Program S1810/A2095

Legislation sponsored by Senator Kennedy (Upstate-Buffalo) and Assemblymember Lentol (Downstate-Brooklyn). This bill would have developed a program for acquiring, creating, improving, conserving and protecting open space in urban areas.

The bill died in Committee within both Houses.

QBS (Qualified Based Selection) for Landscape

Architecture Services S1330/A7819 This legislation was sponsored by Senator Valesky (Upstate-Syracuse) and Assemblymember Buchwald (Downstate – Mt. Kisco) amending the existing finance law to include Landscape Architects and allow Public Agencies to utilize qualifications in procuring design services and negotiating fees rather than through a competitive bid process. Bill allows Landscape Architects in the State to proceed with having Landscape Architects - along with the other 4 design professions - on subsequent QBS legislation in the future.

Passed both houses and was signed into law December 22 by Governor Cuomo.

Statute of Repose S5582/A2198 This legislation was sponsored by Senator Griffo (Upstate-Utica) and Assemblymember Pretlow (Downstate-Mt. Vernon). Currently there is no statute of limitations on when a lawsuit may be brought against a Design Professional for their work. Under this legislation, limitations would be enacted to a 10-year limit for 3rd party claims.

Opposed by trial lawyers resulting in the bill dying in Committee of both Houses.

Due Process for Design Professionals

S4328/A4363 This legislation sponsored by Senator Lanza (Downstate-Staten Island) and Assemblymember Cusick (Downstate-Staten Island) would have repealed an existing 2007 law allowing the NYC DOB Commissioner to ban filing privileges of Design Professionals.

The bill died in Committee within both Houses.

Emergency Responder Act S4135/A4241 This legislation, sponsored by Senator Savino (Upstate-Staten Island/Brooklyn) and Assemblymember Englebright (Downstate-East Setauket) provided certain rights and benefits to licensed Design Professionals and others in the construction industry when responding to a declared disaster.

The bill died in Committee within both Houses.

Besides working on our legislative agenda, the NY Upstate Chapter, ASLA and NYSCLA worked on refreshing the look of our Legislative Brochure, prepared summary reviews for each bill, noting legislators who sponsored and cosponsored the legislation, and included talking points for our Members whom could utilize these points when conversing with their legislators.

There are plans to further expand the Chapter's efforts for Lobby Day, PARKing Day and scale up legislative/advocacy communications in 2019, so keep on a look out moving forward.

NYSCLA Website, www.nyscla.org.

Lobby Day >>



Projects All Around Upstate

See what your Colleagues have been up to in 2018

Take a look at new projects that have been installed and designed recently across our New York Upstate ASLA Chapter region. These next few pages highlight what our Members have been working on over the past years to enhance Upstate Landscapes.

Green Lakes State Park

SYRACUSE, NY

[Appel Osborne Landscape Architecture >>](#)

Appel Osborne completed an exciting project with the New York State Office of Parks, Recreation and Historic Preservation (NYSOPRHP) at Green Lakes State Park. Senior Partner, Pete Osborne, and Associate, Taylor Goldthwait, worked with the park on a project which included reconstruction of a portion of the main park road and modifying a parking area. Design also included increased picnic space and renovated walkways. Sustainable design and green infrastructure were an integral part of this project. The improvements at Green Lakes State Park serve as one of the largest green infrastructure storm water management installations in the region.

The primary goal was to protect and improve water quality and function of the two lakes, one of which is a National Natural Landmark. The site was redeveloped through the implementation of innovative green infrastructure and natural features. Green infrastructure design includes the use of porous pavements, permeable pavers, infiltration and storm water wetland facilities, native tree plantings, a rain garden, and rain cisterns.

The historic Boat House was rehabilitated and repurposed into a four-season Environmental Education Center. A demonstration wetland and outdoor classroom are among the exhibits to educate park visitors on the use of green infrastructure storm water practices.



Monroe County's Highland Park Lilac Adventure Zone

ROCHESTER, NY

[Barton & Loguidice »](#)

The Lilac Adventure Zone (LAZ) is located on the former Cornell Cooperative Extension site in Highland Park. The project addresses the increasing scarcity of opportunities for free play in living environments. Features include an expansion of the historic lilac collection, new accessible pathways, stone seatwalls, picnic pavilions, public parking, bike racks, and an innovative nature play area which was constructed by Monroe County Parks staff. Native hardwood trees that have served multiple functions in county parks for decades find new life and purpose in the LAZ. The complex of free-form timber structures provides opportunities for kids of all ages to explore, discover, and learn by moving. The environment invites free play and imagination. A variety of social spaces are embedded within the site design that support multi-generational family interaction.

Nature play offers a counterpoint to “safety-first playgrounds”. It provides opportunities for children to engage with the natural world in a less structured way. Current research shows that there are many advantages to spending time in nature for children including health, socialization, and cognitive benefits. LAZ provides children opportunities for unscripted play, and a safe place to ‘run wild’, while parents relax and watch their children explore the free-form, unstructured environment.



Bridge Street & Milton Avenue Streetscape Improvements

SOLVAY // GEDDES, NY

Barton & Loguidice »

As part of the Onondaga Lake West Revitalization project, Onondaga County identified a mission to “create a sustainable, inventive, functional multi-modal gateway link along Bridge Street and Milton Avenue, connecting the proposed Onondaga Lake recreational facilities, the NYS Fairgrounds and the Village of Solvay that promotes both the history and future development of the Solvay/Geddes area.” The project entailed the development of a shared-use promenade along Bridge Street, new bicycle and pedestrian facilities linking the New York State Fairgrounds with the Village of Solvay, eventually linking up to an extensive regional trail system of the Onondaga Lake and Empire State Trails.

The new streetscape emerges in an industrial corridor, framed by former and current manufacturing sites, railroad lines, and distribution warehouses. The design theme embraces the former and current railroad and industrialized nature of the area using specific elements and custom designed features to complement and celebrate the history of the local area. Elements such as period lighting, bollards, seating, paving patterns, and custom designed steel railings assist in achieving this vision. The project extends from the Town of Geddes into and through the Village of Solvay, along Bridge Street and Milton Avenue, creating a new gateway between the historic Village and the revitalized Onondaga Lakeshore.



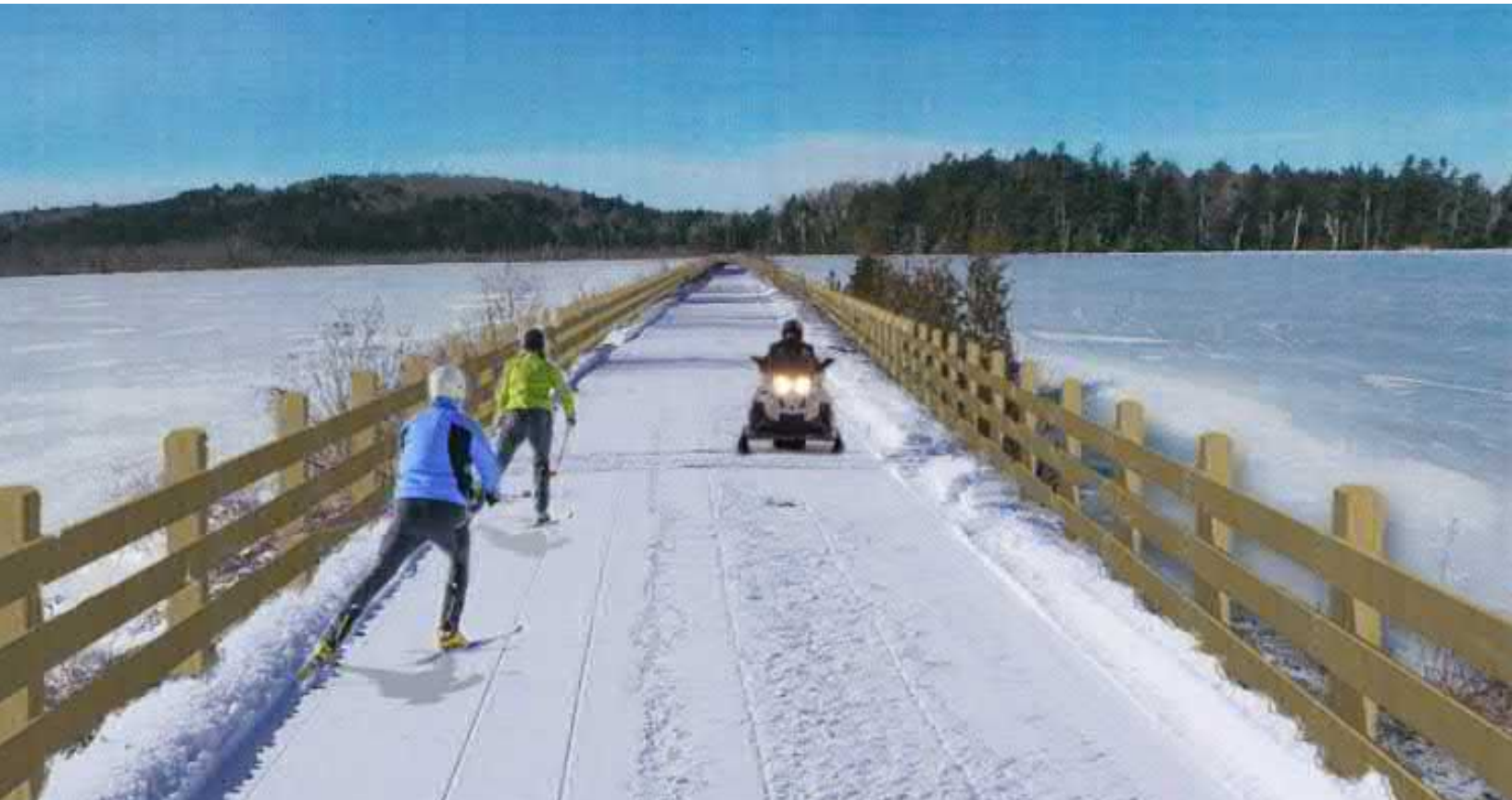
Adirondack Rail Trail

VILLAGES OF TUPPER LAKE, SARANAC LAKE, AND LAKE PLACID, NY

Bergmann »

The NYS Office of General Services hired Bergmann to prepare a Program Report for the rail-to-trail conversion of the northern portion of the Remsen-Lake Placid Travel Corridor (a former railroad bed). This 34-mile segment will connect the outdoor recreation-oriented communities of the Tri-Lakes area (Tupper Lake, Saranac Lake and Lake Placid) in the Adirondack Park with a multi-use, all-season recreational trail for people of all abilities. The Corridor traverses woodlands, wetlands, open water causeways, rock cuts, and populated villages.

Bergmann worked closely with the Stakeholder Group comprised of Members of the involved communities and special-interest groups over a series of several meetings and workshops to identify issues and opportunities for the trail experience and gather information to inform the design process. This study established the practical surface-width of the trail for various sections. It also addressed bridge and culvert re-habilitation needs, the safety infrastructure necessary to accommodate trail-users on bridges, culverts, and causeways, parking/access facilities, and the safety and ingress/egress infrastructure needed at several at-grade public road crossings.



Wegman Family Science & Technology Center

MCQUAID JESUIT HIGH SCHOOL, ROCHESTER, NY

Costich Engineering, Land Surveying & Landscape Architecture, D.P.C. >>

The Wegman Family Science and Technology Center is a state of the art facility at McQuaid Jesuit High School which was completed in the summer of 2018. Costich was tasked with designing the student commons and capturing the school's vision to create a multi-functional pedestrian area which resembles more of a campus atmosphere. The design intent was to carry the indoor uses and design elements to the outside. Design features include multiple gathering areas, amphitheater seating, accessibility to multiple building entry points, an outdoor grilling area, along with new landscaping and green infrastructure practices.



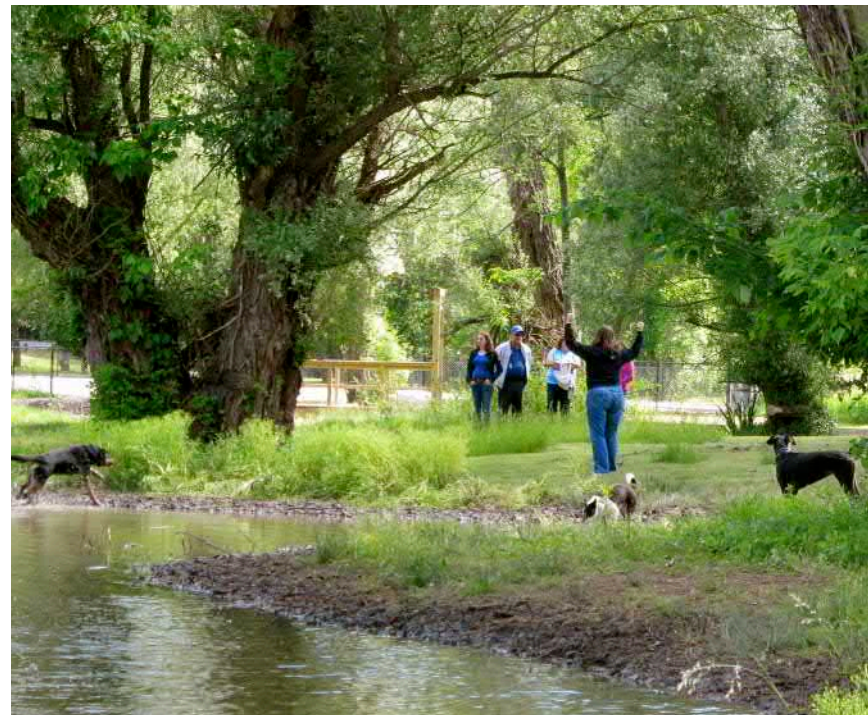
Monroe County Bay Parks Improvements

MONROE COUNTY, NY

**Environmental Design & Research,
Landscape Architecture, Engineering & Environmental Services, DPC >>**

An award-winning Master Plan, for nearly 1,200-acres of Monroe County parkland, located around Irondequoit Bay, led to the County authorizing a single design contract to implement the park improvement projects prioritized in the Plan. These projects, the Bay Parks Improvements, demonstrate an integration and continuity between planning and analysis and design and implementation. All were planned and designed to balance the needs of multiple user groups and provide low-impact design within sensitive environments; and were implemented under very limited budgets. Each demonstrate a different approach to addressing key issues identified in the Plan, including: access and community connectivity, active living to address preventable health issues, conservation and sustainability, waterfront public use and access, dog parks, and shared use trails. All of these improvements effectively support the goals of the Plan by protecting the natural resources of Irondequoit Bay, and by providing activity infrastructure that enhances public health. As a measure of success, creative partnerships, appropriate design strategies, and cost-effective construction techniques resulted in projects that continue to serve as models for context-sensitive, economic, and sustainable park development. As authors of the Plan, and then as designers for the improvements, EDR served as the choreographer, guiding the Plan from vision to fruition.

In 2010 and 2014 the NY Upstate Chapter ASLA recognized the Bay Parks Master Plan with a Merit Award for Planning and Analysis and the Bay Parks Improvements project with an Honor Award for Built Design, respectively.



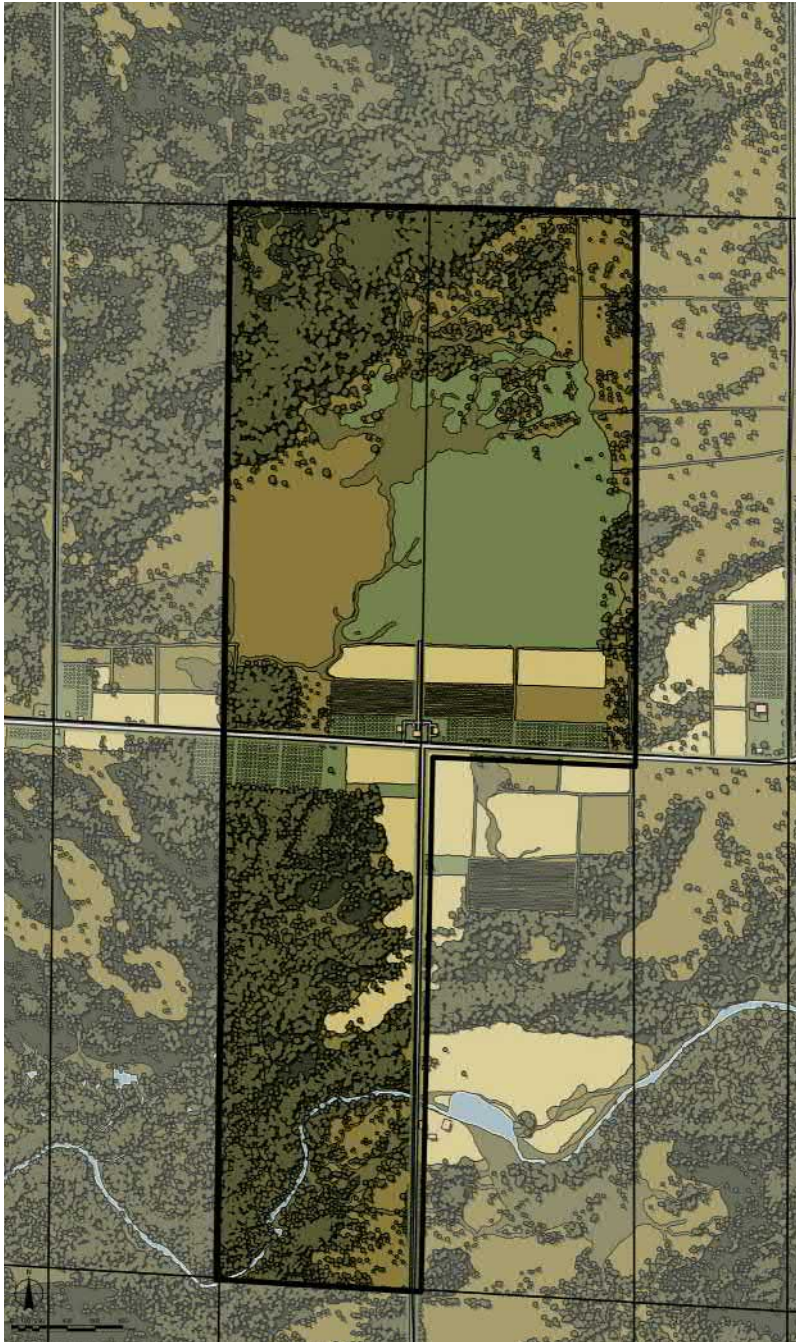
The Warren Hull Home & Farmstead – Treatment of Cultural Landscape

ERIE COUNTY, NY

**Environmental Design & Research,
Landscape Architecture, Engineering & Environmental Services, DPC >>**

Hull House is believed to be the oldest stone dwelling in Erie County NY, and a very rare example of Federal-style architecture. The purpose of this site concept development plan developed by EDR was to guide the preservation and restoration of the cultural landscape. Creating a window into the past through the use of appropriate fencing and road details, and the placement of barns and smokehouses, orchards, trees, gardens, fields and cleared land, the restored landscape was planned to complement and enhance the ca. 1825 landmark while educating visitors about the Hull Family's pioneering past. It was also planned to provide the setting and context for public programs and activities. EDR Landscape Architects collaborating with an in-house team of historians and preservation planners, integrated their knowledge, research, and findings into a user-friendly format. A site history supplement, a site inventory and analysis, wetland and agricultural soil type mapping, a conceptual site plan, and a final concept (with artistic renderings) were developed. These products were based on archaeology, analysis of surviving structures, knowledge of practices common in that period, and historic documentation. Incorporating modern day components into a cultural landscape plan, while remaining as true to history as possible, was a significant challenge. By keeping these elements separate, EDR successfully created the feeling of stepping into the past.

In 2011, the NY Upstate Chapter ASLA recognized this project with a Merit Award for Achievement in Research, Historic Preservation & Communication



Ethelbert B. Crawford Public Library Garden Plaza Master Plan

MONTICELLO, NY

Michael Haas, RLA, ASLA

Delta Engineers, Architects and Land Surveyors >>

This new community Library opens into a vacant lot which proved to be a great asset when the Landscape Architect was asked to provide outdoor programmed space. The design team at Delta Engineers helped guide the Library Garden Committee in establishing goals, objectives and an implementation schedule as part of a Master Planning process. The focus of the outdoor environment was to create spaces for learning, exploration, community gatherings and play. Enhancements included accessible (ADA compliant) pedestrian pathways including green infrastructure (pervious pavers), a whimsical arched entryway, an informative kiosk with a community bulletin board and solar charging station, multiple seating areas, outdoor amphitheater for program gatherings, native plant beds, stage and children's learning area. The Mickey Mouse Clock was restored, relocated and incorporated into the café plaza on the north side. An oversized mosaiced concrete chair based on [A Chair for My Mother](#) highlights a small storytelling area. Additional elements included benches and tables, pedestals for sculpture, and landscaped berms. The entrance gate expresses the plaza's theme in the shape of an open book, while the perimeter fence will feature literary quotations.

Delta continues to work closely with the Library Committee and Sullivan Renaissance to see the vision complete.



Fenimore Art Museum Amphitheater

COOPERSTOWN, NY

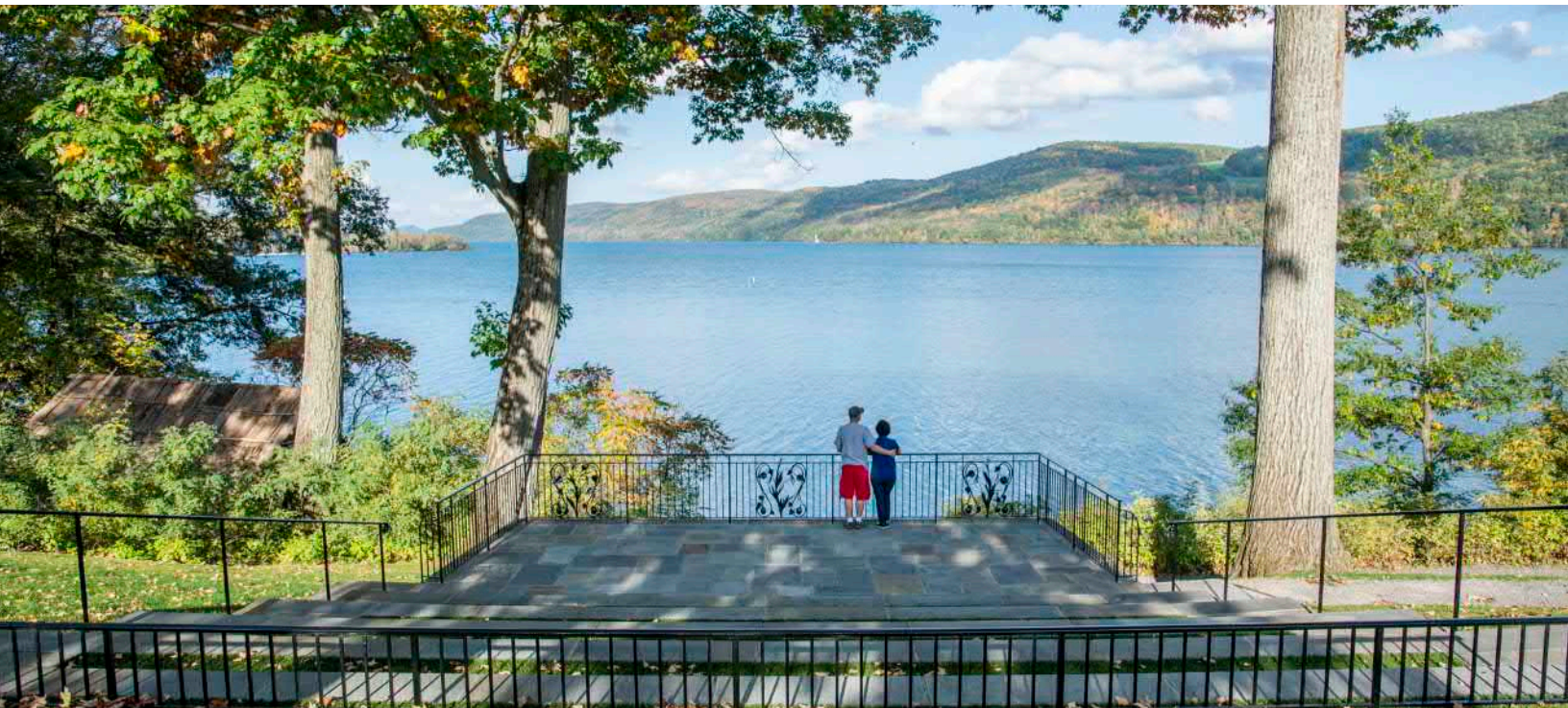
Michael Haas, RLA, ASLA
HAAS Landscape Architects>>

Located in Cooperstown, New York, the Fenimore Museum houses the Thaw Collection of American Indian Art, illustrating the beauty and artistry of American Indian art. As part of the Native American Interpretive Site Master Plan originally developed in 2008 by HAAS Landscape Architects, a Stone Amphitheater overlooking Otsego Lake was added in 2015. Built into the slope of the landscape, the amphitheater serves as a gathering space for visitors to the Museum. The stage offers a place for storytelling and historic interpretation, as well as scenic views of the lake. The stage has expanded outdoor programming beyond staff expectations.

The design of the railing at the edge of the stage illustrates the Three Sisters: corn, beans, and squash, the three main agricultural crops of the Iroquois. Native stone materials were used to tie in with the natural setting. Two 46" diameter oak trees were saved and protected to enframe the view.

Photo simulation was prepared to convey the visual image of the proposed amphitheater within the context of the Museum setting.

Attendance at meetings with the Town Planning and Site Contractors. Estimate of probable cost provided for amphitheater and planting areas.



Oishei Children's Hospital Winter Garden

BUFFALO, NY

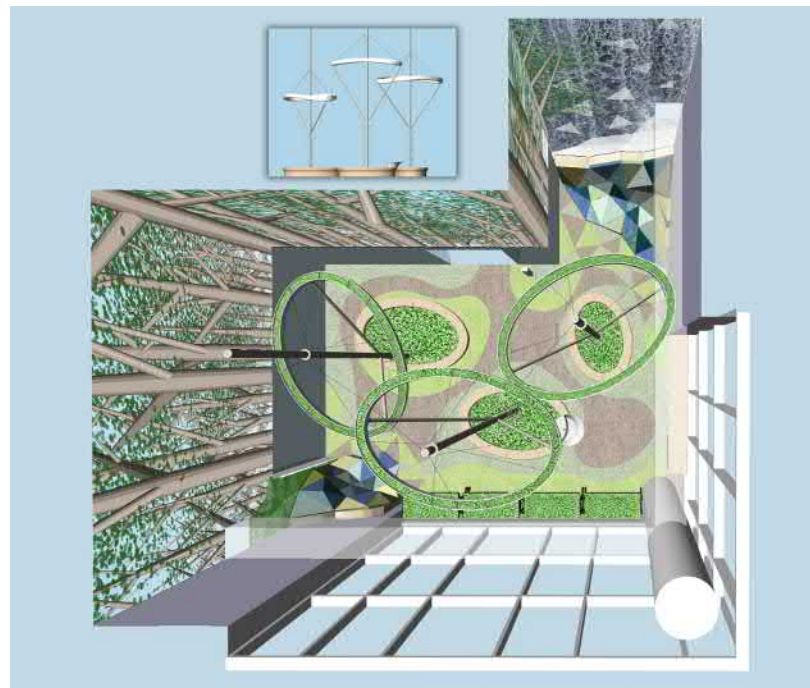
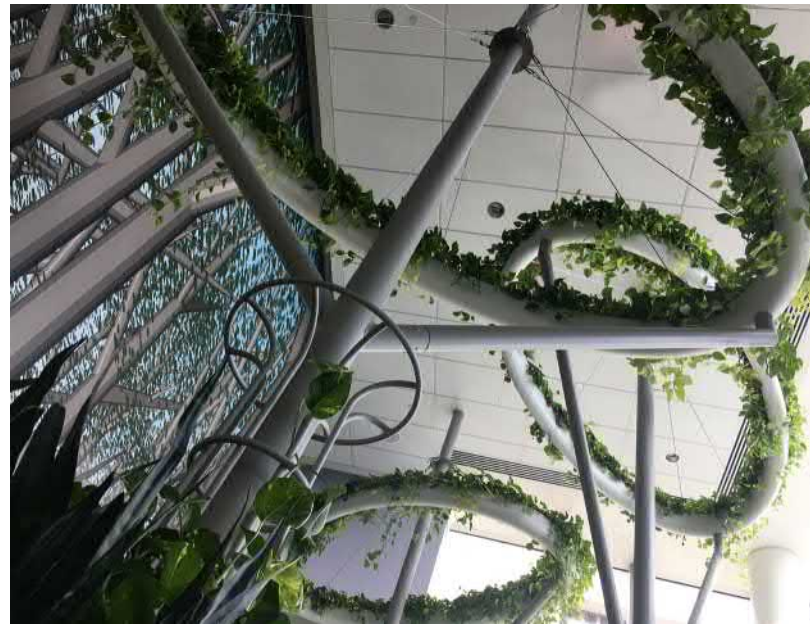
Joy Kuebler Landscape Architect, PC >>

The recently completed Oishei Children's Hospital has many gardens and green roofs, but the most innovative biophilic design feature is the year round indoor Winter Garden, a double height sunny space at the southeast corner of the 5th Floor.

Limited structural capacity, low humidity, and light levels meant that the space could not support trees large enough to fill the full height of the room. Infection control requirements placed further constraints on the irrigation and drainage. Nevertheless, Joy Kuebler Landscape Architect, PC (JKLA) was determined to create an immersive oasis that uses abstracted biophilic principles to provide respite to patients and families.

Three built-in garden islands take up the maximum possible footprint while allowing for wheelchairs and hospital beds to move through the space. Each hosts one of three tree-like sculptures that suspend hanging gardens at various heights within the vaulted space giving the feeling of a lush forest canopy.

The forest mural, generated from a digital model, is a forced perspective giving the illusion that the tree canopy extends well beyond the boundaries of the room. Two large upholstered "rocks" dissolve the corners while providing cozy nooks to comfort children with sensory issues. The northeast mural is a reference to nearby Niagara Falls as it cascades over the boulders below, before flowing into the swirling Burle Marx inspired flooring pattern. Programming includes horticultural therapy in the movable planters stationed under the southern windows. The final biophilic touch is an audio system that fills the space with birdsong and other calming nature sounds.



Arc Herkimer Accessible Park (Arc PARK)

HERKIMER, NY

Klepper, Hahn & Hyatt >>

Based on Herkimer's need for a public park accessible to people of all abilities, Arc Herkimer coordinated with the Village of Herkimer to develop the Arc PARK. The park is located behind the Arc Herkimer Business Park on the site of an old railyard. It is encircled by a one-third-mile fitness trail with five exercise stations incorporated along the route. The park has multiple playground areas for children of different age ranges. These areas are clearly delineated by a system of sidewalks and program elements. Further down, there is a basketball court with height-adjustable hoops and a bandstand with an attached concession stand. Basloe Softball Field lies at the edge of the park. With its improved infield drainage, it can be used by the community more often during wet seasons and sooner after storms. There is a sizable family pavilion and a number of benches positioned around the park for those who need a place to rest or prefer a more leisurely park experience. The Arc PARK is a great place for outdoor events and for people of all ages to come together as a community.

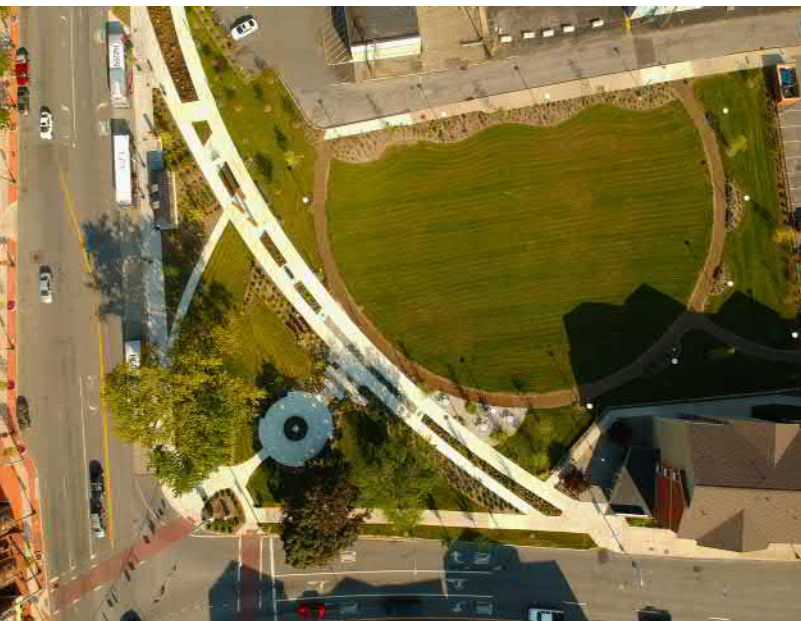


Gateway Plaza

SCHENECTADY, NY

LAndArt Studio NY >>

Gateway Plaza, Downtown Schenectady's new \$1.7M park, was designed as a catalyst for Schenectady's new Artisan District. The park is organized around two strong cross-axes intended to reconnect Schenectady County Community College to the fabric of the downtown and to serve as a powerful first impression of Schenectady. The axes also establish within the park a series of rooms that cater to a diversity of uses. The great lawn is intended to be a flexible green space that can accommodate everything from large concert venues to picnics or throwing a frisbee. Equally important is its important role in providing relief to the encompassing floodplain that threatens this part of downtown. The contemporary style promenade is another prominent feature, offering visitors a richly textured experience that includes three corTen steel sculptures (intended to celebrate Schenectady's past, present and future innovation), rain gardens, salvaged granite cobbles, historic markers, steps designed to double as a small amphitheater or gathering place, artfully designed bike racks and a solar charging kiosk. Since completion the park has been embraced by the community and continues to be activated by local artists and artisans seeking to bring new venues to the community.



Tribute Park

SCHENECTADY, NY

[LAndArt Studio NY >>](#)

Tribute Park was created from three vacant parcels as part of the Capital District Land Bank's efforts to improve local neighborhoods through community revitalization efforts. Tribute Park is a simple, yet elegant park organized around a large, open lawn that allows for flexible programming. Designed to be a vibrant and loved neighborhood park that offers something for people of all ages and abilities, Tribute Park includes a spray park that doubles as an informal stage, a seating terrace, recreational sidewalks, benches, and an open green. A small playground is planned for the near future. The Park provides much needed green space to a community with limited access to recreation opportunities and it has been embraced by the community, who not only helped in planting the Park, but have also risen to the challenge of seeing that it is kept clean. As a result, there has been very little vandalism and the area is now seeing positive, Community focused urban infill for the first time in decades.



RIT Magic Spell Building and Breezeway

ROCHESTER, NY

McCord Landscape Architecture >>

The new RIT MAGIC Spell Building is a University - wide research center with a multi-disciplinary entrepreneurial approach to digital media education and production. The state-of-the-art research center and production studio focuses on the exploration of cutting edge interactive digital media and shares with the RIT Community, Rochester and beyond.

The Breezeway project addressed the deteriorated condition of the main campus entranceway between a large portion of campus parking and the campus academic areas. The newly constructed landscaped pedestrian linkages allow for greater connection to Booth, Gannett, Magic Spell, and the rest of the campus.

The design team prepared concept through final design, construction documents and provided construction oversight services for the new Magic Spell Studio and Breezeway projects. The team worked closely with RIT facilities, administration and educators to assure that the design met the client's needs as well as RIT's commitment to sustainability. The new entranceway and building design celebrates and showcases the same standards and goals in its design. The designs incorporate various pathway connections, new landscaping, emergency vehicle access loop, loading dock area, rain/rock gardens, earthwork, sculpture pads, new lighting, and added new tree varieties to the growing campus arboretum.



ECO Park

AMHERST, NY

[Town of Amherst, NY Planning & Engineering Departments >>](#)

Constructed in 2018 for the Town of Amherst, ECO Park is a 0.6-acre neighborhood park located in the Grover Cleveland Terrace Subdivision which was created in 1923. Named for the Eggertsville Community Organization whose Members provided valuable input during the design process, the Park features a new playground, ornamental CMU seat wall, benches, trees and five engraved granite columns. The Park is located on a parcel originally known as “School Circle”, a semicircle formed by Crosby Boulevard. In addition to Crosby Boulevard, three additional streets intersect the Park at right angles. All of the streets in the Subdivision are named for people and places associated with former United States President, State of New York Governor and City of Buffalo Mayor Grover Cleveland. Each of the five granite columns are engraved with the ECO Park logo and intersecting street’s name on the street side with historical information about the place or person for which the street was named engraved on the opposite side.

The concept plan for the ECO Park was designed by Town of Amherst Senior Landscape Architect Robert C. Walter, RLA, ASLA.

- » Construction documents and construction supervision were provided by Chris Schregel of the Town of Amherst Engineering Department.
- » The playground was designed by the Town’s Recreation Department and KOMPAN with equipment provided by KOMPAN.
- » The columns were engraved by Leon Komm and Son.
- » The Park was constructed by ValleyView Construction Services

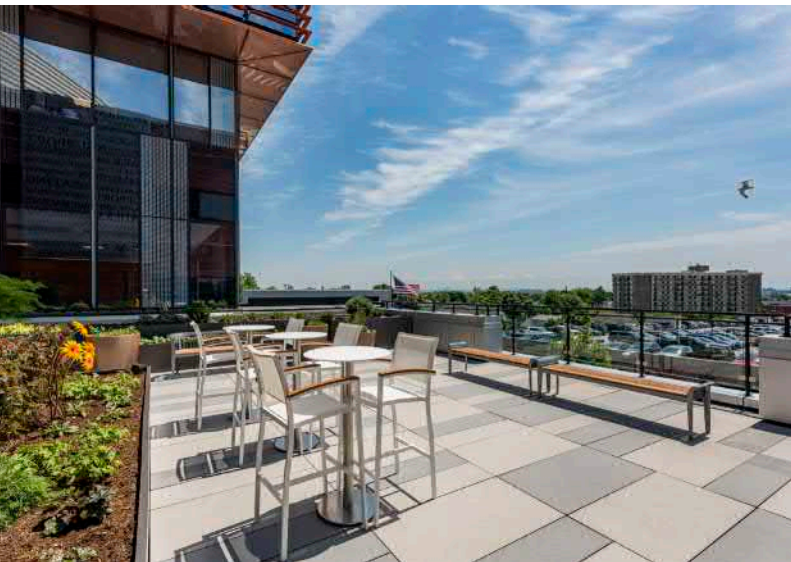
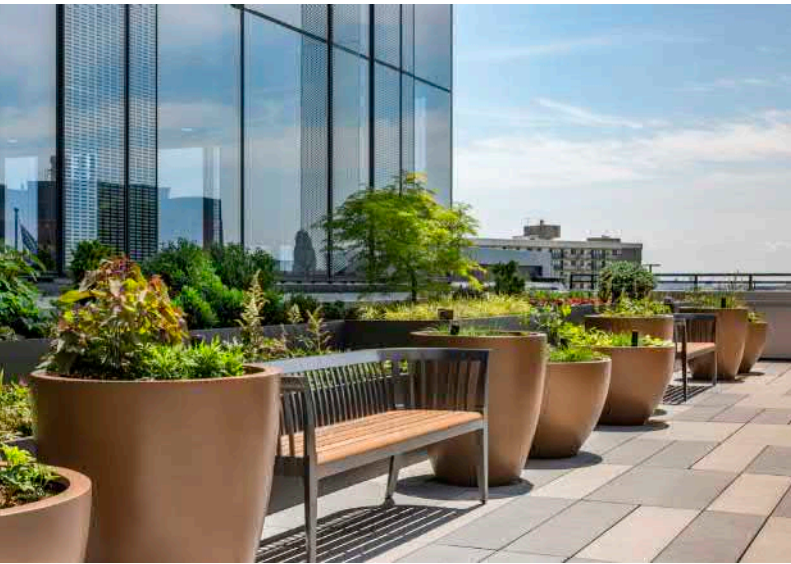


MMMB Patient Terrace at Roswell Park Cancer Institute

BUFFALO, NY

Trowbridge Wolf Michaels Landscape Architects LLP >>

The MMMB Patient Roof Terrace at Roswell Park Cancer Institute provides patients and their families a moment to step outside and take respite. The 3,000 square foot terrace was created from a previously non-accessible rooftop. It offers an uplifting space that unifies the architecture of the newly constructed state-of-the-art addition and the original hospital with a welcoming amenity for the hospital community. A gracious wood-clad entry leads visitors from the hospital interior to a series of intimately-sized outdoor garden rooms furnished with comfortable flexible seating to accommodate individuals and small groups. Blending harmoniously with the Scott Bieler Clinical Sciences Center, TWMLA envisioned a lush and tranquil garden, crafted with a high-quality material palette to underscore the garden's purpose as a comfortable environment for reflection. The peaceful garden incorporates the technical details necessary to execute the challenges of roof-specific design.



Photographer credit: 2018 Copyright James Cavanaugh

Chautauqua Odland Plaza

CHAUTAUQUA, NY

Wendel WD

Architecture, Engineering, Surveying, and Landscape Architecture, PC >>

With the construction of the newly rebuilt Amphitheater for the Chautauqua Institution, Anne and Steve Odland, in partnership with the Chautauqua Foundation, generously donated to establish a fitting “gateway” plaza for this unique regional destination within the National Historic Landmark setting.

Odland Plaza has quickly become an appropriate gathering spot and staging area for people entering and leaving the Amphitheater, as well as a comfortable place to “hang out” for the community at all other times. The final design for the plaza included a unique curvilinear layout of new colorful pavers, brick seatwalls and numerous benches made of recycled materials, focal trees and planting areas, rain gardens to filter plaza run-off, a space for a food truck and a new ticket/concession structure that complements the Amphitheater aesthetics and design.



Tappo Rooftop

CHAUTAUQUA, NY

Wendel WD

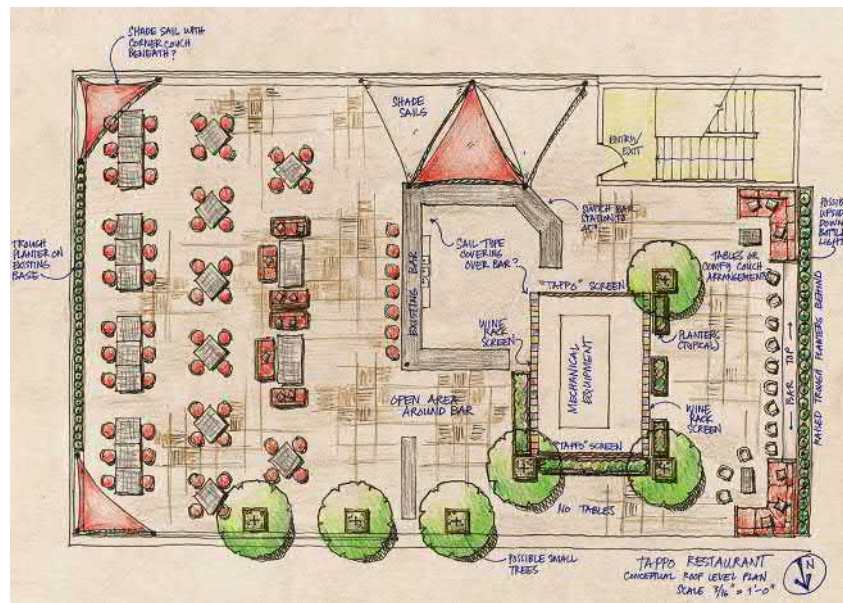
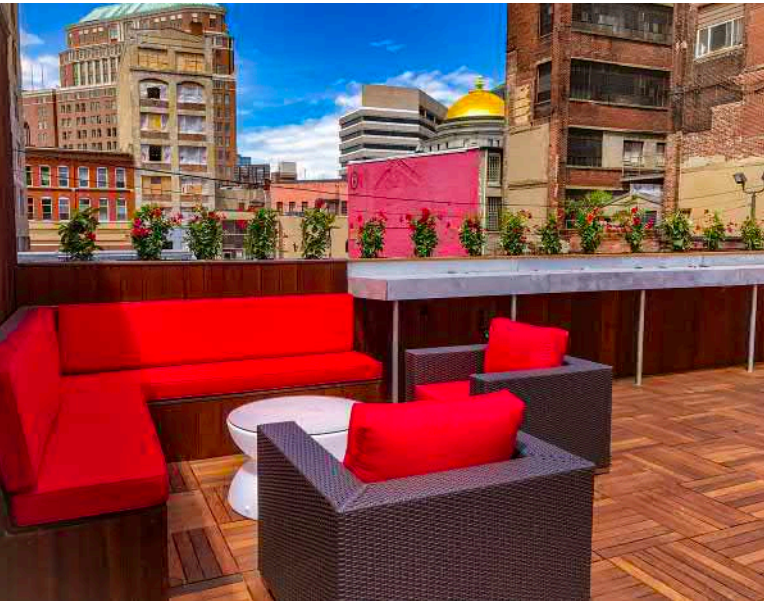
Architecture, Engineering, Surveying, and Landscape Architecture, PC >>

Tappo (Italian for “Cork”) is a popular Italian restaurant located in Downtown Buffalo.

This was a very unique and non-traditional project for our Landscape Architectural group. The developer/restaurant owner wanted to expand the rooftop terrace while still keeping with the restaurant’s theme. The challenge was that the expansion wrapped around a large mechanical unit and they wanted this to “disappear” with the proposed design solution. We tried to avoid the more obvious and traditional wood lattice screening for this focal center area.

Taking cues from the restaurant’s interior, which highlights an impressive floor to ceiling wine rack, we proposed a similar custom-made outdoor wine rack that incorporated colorful empty wine bottles that would be lit up at night, and incorporates colorful vines that would grow up this unconventional screen around the bottles.

The terrace expansion also included new flooring, unique backlit signage, raised planters, built-in sofa-style seating and additional bar tops.



Green Infrastructure Improvements – Route 32

WATERVLIET, NY

Weston & Sampson PE, LS, LA, PC >>

As a part of the New York State Department of Environmental Conservation’s Green Innovation Grant Program, the City of Watervliet pursued a project that sought to revitalize the Route 32 Corridor, which serves as a major thoroughway for the City and includes a mix of residential, commercial, and industrial uses. The Route 32 Green Infrastructure Project aimed to reduce stormwater runoff generated within the urban environment while educating citizens about the benefits of green infrastructure to the natural environment and greater community.

To achieve this goal, the project involved a variety of green infrastructure elements along the corridor to showcase the ways stormwater treatment can be integrated into everyday spaces. Strategies implemented included porous asphalt parking lanes, underground retention chambers, bioretention gardens, rain gardens, and roadside bio-cells. These strategies illustrate that stormwater treatment can not only be visible, but aesthetically pleasing. To educate the local community about green infrastructure, signage was developed with descriptions of each treatment practice, and corresponding informational graphics illustrating the flow of stormwater through the systems.

“The City of Watervliet is proud to be one of several showcase communities working towards reducing urban stormwater, while educating the community of these innovative practices,” Watervliet City Manager Jeremy Smith said. “This project was the first of three phases to improve the Route 32 Corridor and remains the backbone of our continual investment in our city and protecting our natural resources downstream.”

*2016 Project of the Year – Environmental: Less Than \$1 Million
American Public Works Association Capital Branch*



Halfmoon Veterans Memorial

HALFMOON, NY

Weston & Sampson PE, LS, LA, PC >>

The Veterans Memorial at Halfmoon Town Park was created in honor of all past, present, and future U.S. Veterans.

The focal point of the Memorial is an illuminated granite pentagon, emblazoned with the seals of the five military branches. A black granite plinth etched and colored to represent an American Flag draped over the memorial is positioned on top of the pentagon.

The Memorial space begins with a brick walkway spanned by granite bands, displaying the slogans for each military branch. Individual bricks are engraved with the names and years of service of veterans from the community. An online database created by the Town assists visitors in locating specific names, as well as providing additional information and photographs of each Veteran.

Continuous granite benches, with one section removed to display a Prisoner of War Missing in Action Memorial black granite plinth surround the memorial. A low concrete and granite pedestal provides a backdrop to the memorial, engraved with the Memorial Dedication and supports the flagpoles.

“The Veterans Memorial creates a special place in the Town of Halfmoon, which pays tribute to all of Veterans past, present, and future,” Town of Halfmoon Supervisor Kevin Tollisen said. “We’re proud to have created a special place for such important members of our community.”



Pollinator Plantings Spread Like Weeds!

Landscape Architects Needed to Grow Pollinator Planting Program

The Adirondacks need Landscape Architects and their vision.

AdkAction initiated a Pollinator Garden Planting Project creating 62 pollinator gardens in the Adirondacks. Over the past two years, 30,000 free wildflower seed packets have been distributed with a colorful brochure explaining the importance of pollinators for biodiversity, food security, and the New York State Agricultural Economy. In addition to hands-on conservation measures, AdkAction has sponsored three of the world's top Monarch and pollinator scientists to give free public lectures in the Adirondacks.

We are working with Local and State officials to advocate for a modified roadside mowing to protect Monarch habitat. Also, whenever possible we spread the word about the harmful impacts of neonicotinoid pesticides on pollinator species.

The response has been good. We have seen a major increase in pollinator gardens and milkweed plantings in our communities, and interest continues to grow.

In order to build on this momentum, we want to continue making a difference by creating community pollinator gardens at schools, institutions, and in other public spaces to provide additional pollinator habitat in this special Adirondack region.

We received a small grant to fund the Pollinator Mobile Unit aka 'who ya gonna call' to assist in pollinator garden plantings. This will consist of an enclosed trailer, painted with fun and beautiful flowers and pollinators, that contains all of the tools and resources needed for an efficient pollinator garden planting experience. We are mindful not to take business away from Landscape Architects. Instead we look to work with Landscape Architects and institutional groundskeepers, when applicable, provide assistance in the initial creation of pollinator gardens in public spaces.

Chris Cohan, RLA

Board Member, AdkAction



Monarch populations have been reduced by 90%. We initiated 62 new pollinator gardens last years and plan to more than double that this year.

We need input and ideas from Landscape Architects, and even some garden designs for larger institutions. If you are interested in volunteering your time and energy to ensure that the gardens we design and plant are top-notch, please reach out to chris@adkaction.org and let me know that you would like to help. We will send you pictures of garden sites and ask for your input in the Spring. Another way to help is to share pollinator garden designs that you have already used or completed that we can provide as a resource to our growing community of pollinator promoters.

Please put our Pollinator Summit on your calendar for April 5, 2019 at the Tannery Pond Community Center in North Creek, NY. The Summit will run from 10 am to 4 pm and feature a nationally-recognized key note speaker, locally-pollinated lunch, plus lectures and breakout sessions designed to end our cultural obsession with the short green grass lawn and put the focus on habitat for pollinators and other wildlife that is also beautiful and functional for humans. If you would like to donate your time to offer a workshop during the Summit, or if you would like to be an attendee, please let us know.

We plan to grow our project and welcome your professional advice. Also, this project may be a blueprint for an expanded statewide program which should be led by Landscape Architects. We are happy to share all that we have learned with you.

Finally, we encourage you to make a donation to the Adirondack Pollinator Project through AdkAction in the amount of \$35 or more. The \$35 will be enough to buy 100 Northeast Native seed packets, or 2000 square feet of pollinator habitat, as well as a “starter Membership” to AdkAction. You are welcome to do so at [AdkAction.org/donate](https://adkaction.org/donate).

For further information see:

AdkAction. <https://www.adkaction.org>
<https://adkaction.org/pollinators>



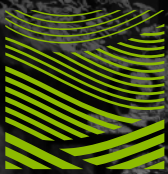
Pollinators welcome.

Flowers planted here provide pollen and nectar to support pollinators. As they move from plant to plant, these creatures protect biodiversity, grow the NYS economy, and put food on our tables. Areas of bare soil are available for ground-nesting native bees and dried plant material is left in place over-winter to create nesting sites. Pollinator habitats like this are managed without chemicals, ensuring a safe, healthy habitat for all.

[AdkAction.org/pollinators](https://adkaction.org/pollinators)

A project of AdkAction in collaboration with Lake Placid Land Conservancy, The Wild Center, and Paul Smith's College.

The Adirondack Pollinator Project has been successful in spreading native pollinator plants and seeds. Last year, we distributed 30,000 packets of wildflower seeds.



ASLA
NEW YORK
UPSTATE

HALS NY-10

Warner Castle, Sunken Garden
Alling S. DeForest

ASLA-NYU is looking for a volunteer to serve as the chapter **Historic American Landscapes Survey** liaison.

Contact the current HALS liaison for info
zakery.steele@stantec.com

Visit nps.gov/hdp/hals to learn about the HALS program.

NY UPSTATE CHAPTER SCHOLARSHIP FUND

PLEASE CONSIDER MAKING A DONATION TO THE
NEW YORK UPSTATE CHAPTER ASLA SCHOLARSHIP FUND

In 2010, the New York Upstate Chapter ASLA (NYU-ASLA) embarked on a Scholarship Program to bestow monetary awards to undergraduate students studying Landscape Architecture based on academic excellence and involvement with their Student Chapters of ASLA.

Our Chapter is dedicated to promoting the competencies and values of Landscape Architecture; and what better way than to encourage students who are already committed to our profession to continue their studies and support our organization's future leaders?

The Scholarships will be awarded through nominations on applications with criteria established by each college's Scholarship Committee, and then approved by the Executive Board. Amounts and number of Scholarships will be determined by our Chapter Executive Committee based upon recommendations of the Scholarship Committee and funds available.

To donate visit our website www.nyuasla.org/support/



Looking Forward to 2019

March

(1st-2nd) Native Landscape Symposium
(Ithaca, NY)

(15th) Annual Reception & Awards
Celebration (Corning, NY)

(16th) Half Day Event, 3-4 PDH
(Southern Tier)

(19th-20th) Natural Design: An
Intensive Two-Day Workshop
(Cornwall, NY)

(28th-30th) 6th Fabos Conference
on Landscape & Greenway Planning
(U Mass Amherst, MA)

April

World Landscape Architecture Month

May

(8th) Lobby Day (Albany)

June

July

(Half Day Event, 3-4 PDH
(Eastern Section)

August

September

PARKing Day (Various Locations)

October

Annual Chapter Executive Committee
and Board Retreat (TBD)

Half Day Event, 3-4 PDH (Rochester
Section)

(19th - 22nd) National ASLA Annual
Meeting (Philadelphia)

November

Technical Workshop (Cornell, Ithaca)

(15th-18th) Conference on Landscape
Architecture (San Diego, CA)

This calendar is subject to change so
please go to our website
(www.nyuasla.org) for all event updates.



ARCHITECTURE • FACILITIES • TRANSPORTATION

ENVIRONMENTAL • SPECIALTY PRECAST

SURVEY & MAPPING • LANDSCAPE ARCHITECTURE



AN ISO 9001:2015 CERTIFIED COMPANY

delta-eas.com

ENDWELL OFFICE
607.231.6600

VERNON OFFICE
315.953.4200

CHEVY CHASE OFFICE
301.718.0080



ASLA
NEW YORK
UPSTATE

ASLA New York Upstate Chapter
312 West Commercial St.
East Rochester, NY 14445



BERGMANN
ARCHITECTS ENGINEERS PLANNERS

*Building a more
sustainable world
by design.*

www.bergmannpc.com

NATIONAL FIRM. STRONG LOCAL CONNECTIONS.



AVBI Outdoor Mobility Center



NYS Rte 198 "Scajaquada" Reconstruction