

2015 CHAPTER AWARDS PROGRAM

New York Upstate Chapter | American Society of Landscape Architects



Merit Award of Achievement Award Category: Built Design

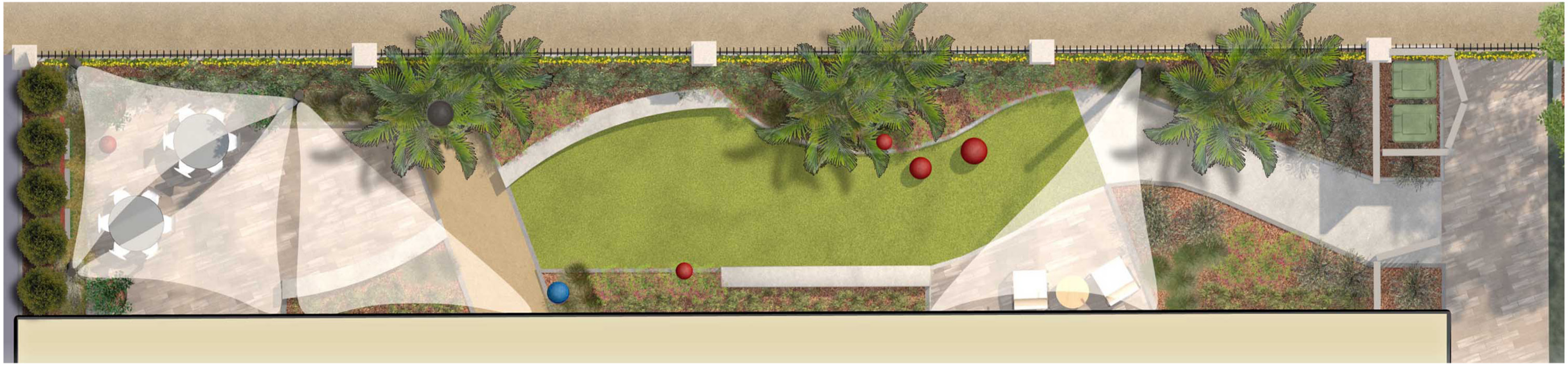
Allison Avenue Office Building Retreat La Mesa, CA

Project Description

Allison Avenue Office Building Retreat is an urban renewal project in La Mesa, California. The design transformed a bleak and uncomfortable asphalt side alley into a lush outdoor living/working space. The landscape design responds to the larger building remodel by way of contemporary style and unique features. Being an event space outdoor extension and retreat space for clients and employees, this new design provides a variety of seating areas shaded by overhead sails and palms. Seatwalls curve through the design connecting the softness of the planting and artificial turf to the bold lines of hardscape and gathering areas. The most noticeable focal elements in this space are the large, brightly colored and playful concrete spheres that punctuate the landscape. While adding visual interest, these spheres also carry a more meaningful purpose. The red spheres that vary in size symbolize parents and children, while the single blue sphere symbolizes the important role of the surrogate. A granite sphere water feature symbolizes God, the author of life.



P.O. Box 356
Orchard Park, NY 14127 716-508-8341
www.insitelandarch.com



The most noticeable focal elements in this space are the large, brightly colored and playful concrete spheres that punctuate the landscape. While adding visual interest, these spheres also carry a more meaningful purpose. The office this space serves matches surrogate mothers to hopeful, soon to be parents. The red spheres that vary in size symbolize parents and children, while the single blue sphere symbolizes the important role of the surrogate. A granite sphere water feature symbolizes God, the author of life. Together they form a powerful visual representation of the connections this office creates.



The space is also loaded with California native plant species that draw in birds, butterflies and other pollinators. By providing food through plant species, water through the granite sphere fountain, and cover through various layers of native plant materials, this unique space is now a Certified Wildlife Habitat by the National Wildlife Federation. By using primarily low water use plants, artificial turf lawn, and a highly efficient irrigation system, the project's estimated annual water use is only 33% of the City's maximum allowable water use. The grading and drainage design provides positive surface runoff away from the building combined with permeable pavers and artificial turf and a linear dry well to capture and percolate storm water runoff.

